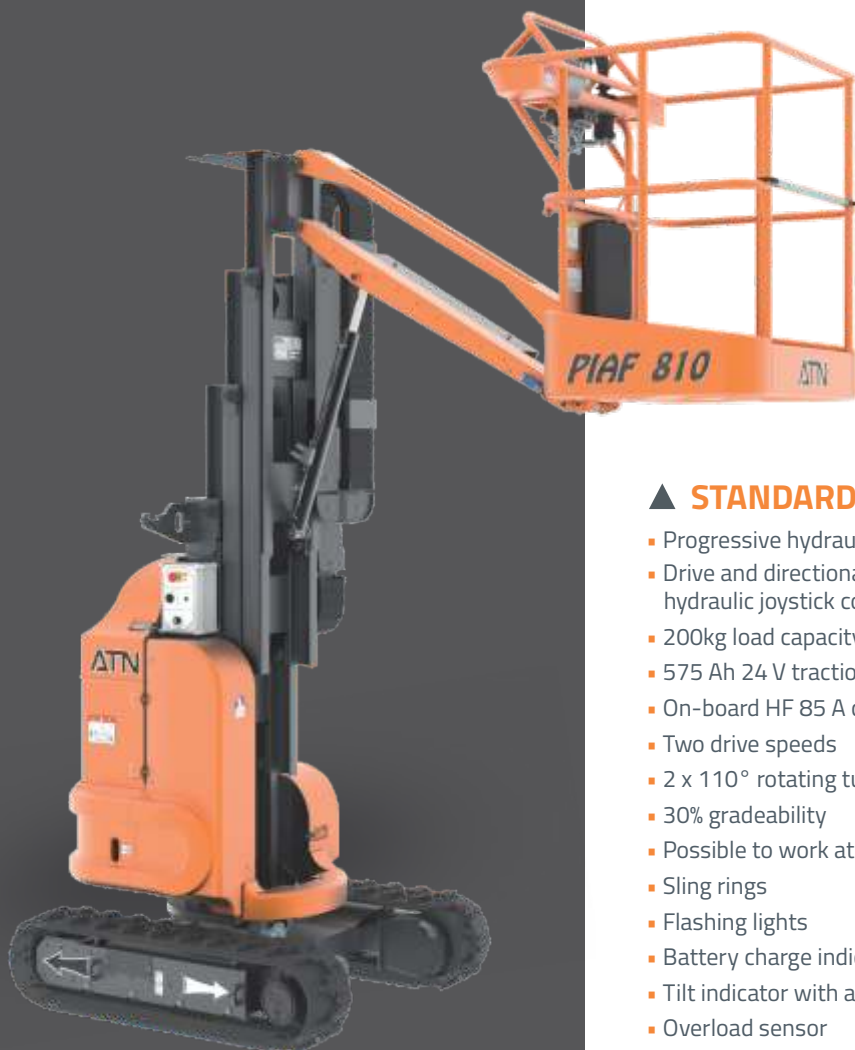


**ATN**

# PIAF810

## MAST BOOM LIFT - CRAWLER



### MAIN FEATURES

Working height .....8.13m / 26.67ft  
Horizontal outreach .....3m / 9.84ft  
Ground pressure ..... 49kN/m<sup>2</sup>  
Fully hydraulic (Drive and elevation)  
Easily transportable on trailer

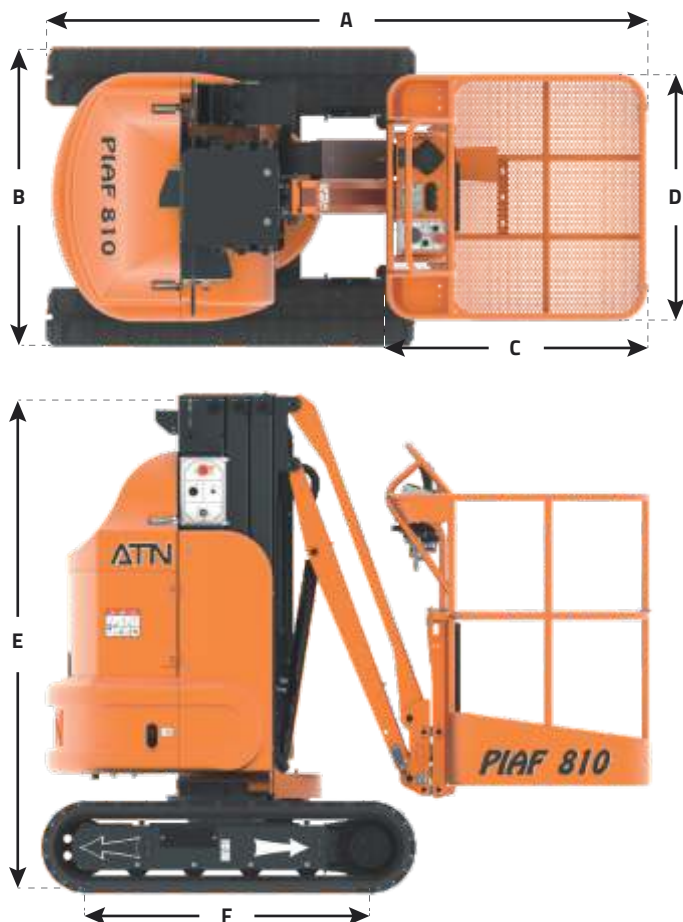
### ▲ STANDARD EQUIPMENT

- Progressive hydraulic movement controls
- Drive and directional movement controls carried out with hydraulic joystick controls
- 200kg load capacity
- 575 Ah 24 V traction battery with centralised charging
- On-board HF 85 A charger
- Two drive speeds
- 2 x 110° rotating turret
- 30% gradeability
- Possible to work at maximum height
- Sling rings
- Flashing lights
- Battery charge indicator with cutoff at 80%
- Tilt indicator with alarm
- Overload sensor
- Hour meter

### ★ ACCESSORIES & OPTIONS

- Non-marking rubber tracks
- Compressed air line
- Maintenance and battery charging kit
- Wall mounted charger
- Food grade hydraulic oil
- Biodegradable hydraulic oil
- Extreme cold Kit
- Power supply in the platform
- Movement cut off when tilt > 5°
- Drive alarm
- Customer colour(s) paint

# ATN PIAF810 MAST BOOM LIFT - CRAWLER



Working height	8.13m / 26.67ft
Floor height	6.13m / 20.11ft
Maximum horizontal outreach	3.00m / 9.84ft
Load capacity (Interior, 2 people, wind 0 km/h)	200kg / 441lbs
Load capacity (Exterior, 1 people, wind < 45 km/h)	200kg / 441lbs

A	Length	2.47m / 8.10ft
B	Width	1.20m / 3.93ft
C	Platform length	0.80m / 2.62ft
D	Platform width	0.93m / 3.05ft
E	Height	1.98m / 6.49ft
F	Wheelbase	1.15m / 3.77ft

Turret rotation	2x110°
Drive speed (stowed)	1.8km/h / 1.11mph
Drive speed (raised)	0.8km/h / 0.49mph
Gradeability (stowed)	30%
Maximum tilt.	5°
Inside turning radius (Ri)	0m / 0ft
Outside turning radius (Re)	1m / 3.28ft
Total weight	2200kg / 4850lbs
Ground pressure	49kN/m²

P810

