

# CMC S18F

## TRACK-MOUNTED BOOM LIFT



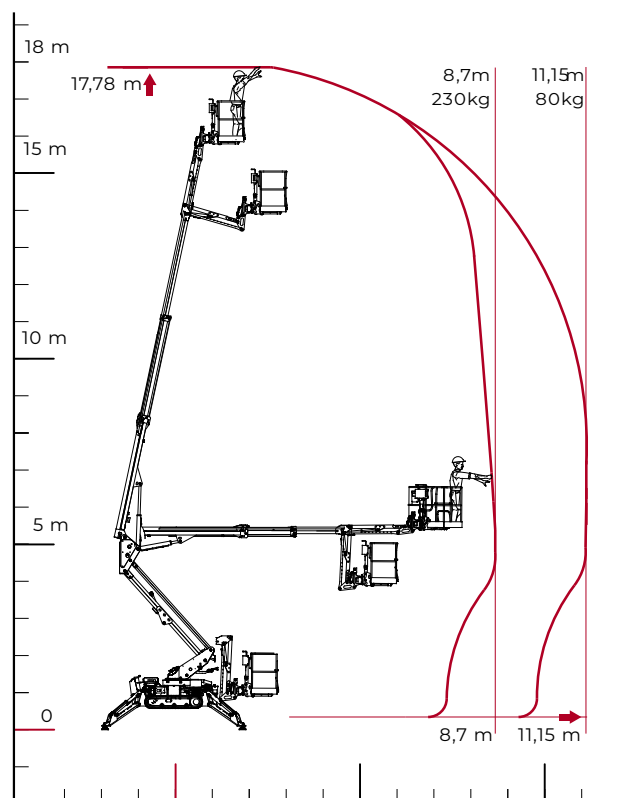
## TECHNICAL SHEET

### PERFORMANCE AND DIMENSIONS

#### Main features

Equipped with a single pantograph and a two-stage telescopic boom plus jib, mechanically adjustable tracks in height and width and with an impressive lateral outreach, this is a multipurpose aerial platform with amazing performance which fully meets the needs of the both end user and rental company.

Max. working height	<b>17,78 m</b>
Max. reach with 80 kg	<b>11,15 m</b>
Platform height	<b>15,78 m</b>
Max. load in basket	<b>230 kg</b>
Basket dimensions	<b>1,4 x 0,7 x 1,1 m</b>
Basket rotation	<b>+/- 90° (options)</b>
Turret rotation	<b>+/- 178° (356° non-continuous)</b>
Total weight	<b>2495 Kg</b>



**CMC**  
**S18F**  
**TRACK-MOUNTED BOOM LIFT**

