

CMC S15F

TRACK-MOUNTED BOOM LIFT



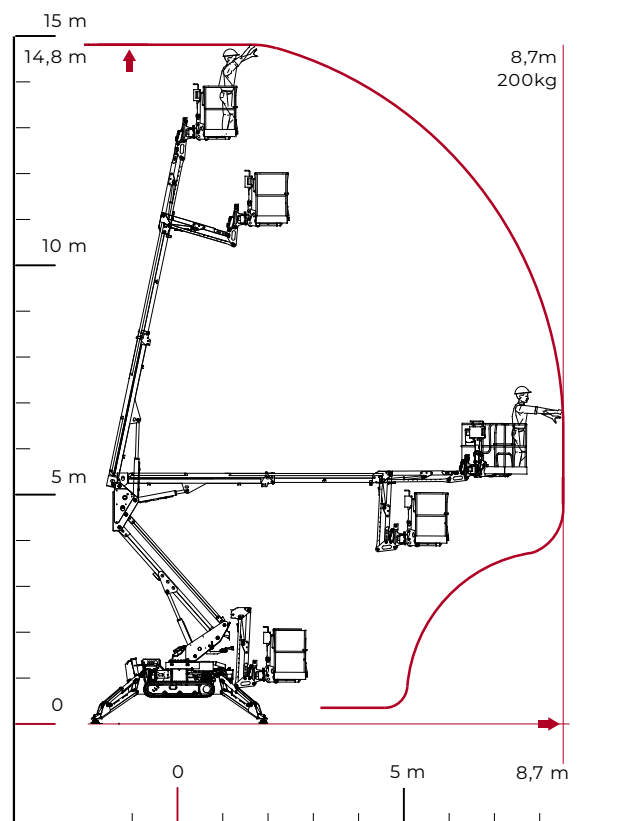
TECHNICAL SHEET

PERFORMANCE AND DIMENSIONS

Main features

Geometric platform without outreach limiting device, with pantograph and single telescopic extension boom plus jib. It offers excellent performance in all types of work, thanks to a compact stabilisation area that provides maximum stability even on the most difficult of surfaces.

Max. working height	14,8 m
Max. reach with 200 kg	8,7 m
Platform height	12,8 m
Max. load in basket	200 kg
Basket dimensions	1,4 x 0,7 x 1,1 m
Basket rotation	+/-90° (options)
Turret rotation	+/- 178° (356° non-continuous)
Total weight	2378 Kg



CMC
S15F
TRACK-MOUNTED BOOM LIFT

