

CMC
S41

TRACK-MOUNTED BOOM LIFT

mift
BY MTANDT



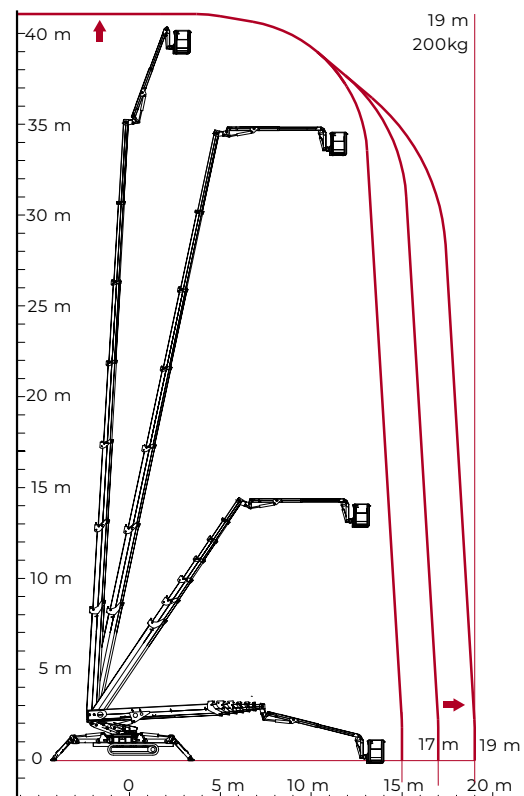
TECHNICAL SHEET

PERFORMANCE AND DIMENSIONS

Main features

No one is in its league. With its telescopic boom with 6 extensions, plus the articulated telescopic jib, the CMC S41 is capable of reaching the extraordinary working height of 41m above the ground and the lateral outreach up to 19m with a unique payload of 200kg.

Max. working height	41 m
Max. outreach with 200 kg	19 m
Platform height	39 m
Max. load in basket	200 kg
Basket dimensions	2 x 0,8 x 1,1 m
Basket rotation	+90°
Turret rotation	+/- 180° (360° continuous)
Total weight	13460 Kg



CMC
S41

TRACK-MOUNTED BOOM LIFT

