

DINGLI

LEO 30T-PLUS

SPIDER LIFT-CRAWLER

DINGLI[®]
Exceed · New Height

LEO 30T-Plus

PERFORMANCE

Working height, max. (300 kg / 400 kg)	30.00 m / 27.00 m
Working height, max. (both sides narrow)	25.00 m
Working height, max. (one sides narrow)	27.00 m
Platform height (300 kg / 400 kg)	28.00 m / 25.00 m
Platform height, max. (both side narrow)	23.00 m
Platform height, max. (one side narrow)	25.00 m
Horizontal outreach, max. (400 kg)	12.70 m
Horizontal outreach, max. (300 kg)	14.00 m
Horizontal outreach, max. (140 kg)	16.00 m
Horizontal outreach, max. (both sides narrow)	14.50 m
Platform capacity, max.	400 kg
Platform capacity, max. (both sides narrow)	250 kg
Jib, movable	180 °
Platform, rotatable	180 °
Turntable rotation, max.	450 °
To be jacked up on ground slope of	16.7 ° / 30.0 %
Track drive, height- and width-adjustable	24 / 22 cm
Gradeability, max.	16.7 ° / 30.0 %
Slope angle, max.	21.0 ° / 38.0 %
Travel speed, max.	3.0 km/h

MEASUREMENTS*

Platform (height) (A)	1.10 m
Platform (length) (B)	1.20 m
Platform (width) (C)	0.80 m
Length (D)	7.70 m
Length without platform (E)	7.50 m
Height (F)	1.98 m
Width, min. (G)	1.58 m
Ground clearance, max. (H)	0.43 m
Track (length x width) (I)	1.92 x 0.25 m
Outrigger:	
n wide (length) (J) X (wide) (K)	5.51m/5.60 m
n narrow (length) (L) X (length) (M)	7.55m/2.99 m
n left or right narrow (width) (N)	4.30 m
n front or back narrow (length) (O)	6.53 m
Outrigger plate (length x width)	0.31 m x 0.22 m

WEIGHT*

Total weight	4550 kg
Live load in travelling position	3.60 kN/m ²
Live load in working position	1.81 kN/m ²
Point load per outrigger plate, max.	32.00 kN

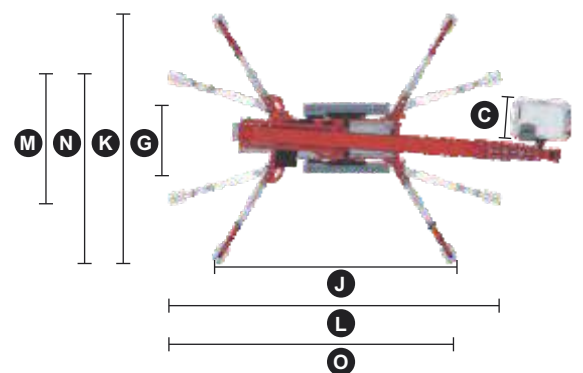
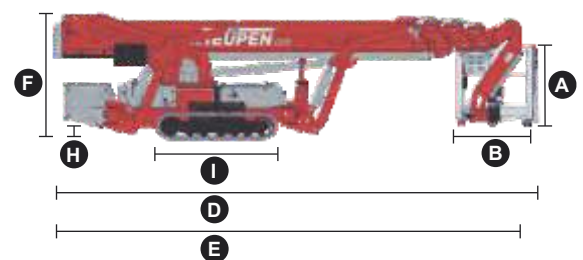
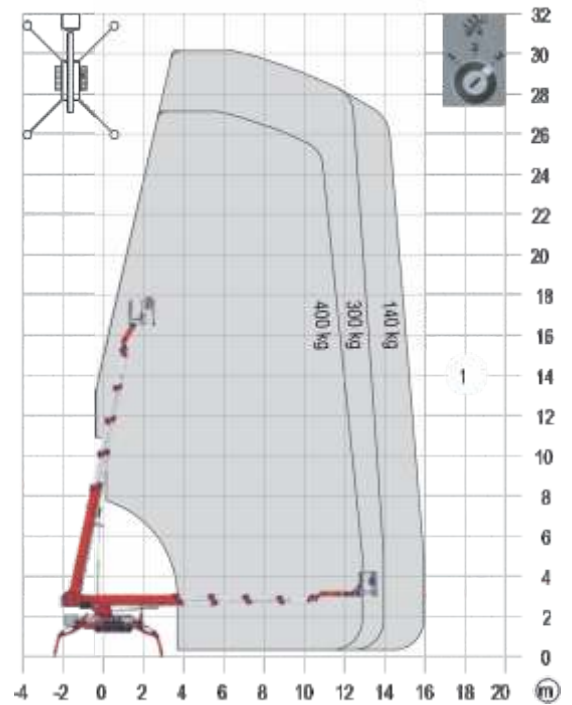
POWER SOURCES

Standard power sources:	
Electric motor	(country-specific 1-phase)
Combustion engine (Diesel)	Kubota D902 (16.1 kW / 21.6 hp)
Optional power source:	
Battery drive (AGM)	80 V
Fuel tank capacity (Diesel engine)	39.0 l

POWER SUPPLY

Electric current, max.	country-specific, on request
------------------------	------------------------------

LEO 30Tplus



STANDARDS

Harmonised standard DIN EN 280:2016