

**MLIFT**  
**LEO 35T-PLUS**  
**SPIDER LIFT-CRAWLER**



# MLIFT

## LEO 35T-PLUS

### SPIDER LIFT-CRAWLER



## LEO 39T-Plus

### PERFORMANCE

Working height, max. (300 kg / 400 kg)	35.00 m / 32.00 m
Working height, max. (both sides narrow)	30.00 m
Working height, max. (one sides narrow)	32.00 m
Platform height (300 kg / 400 kg)	33.00 m / 30.00 m
Platform height, max. (both side narrow)	28.00 m
Platform height, max. (one side narrow)	30.00 m
Horizontal outreach, max. (400 kg)	13.00 m
Horizontal outreach, max. (300 kg)	14.00 m
Horizontal outreach, max. (140 kg)	16.00 m
Horizontal outreach, max. (both sides narrow)	14.50 m
Platform capacity, max.	400 kg
Platform capacity, max. (both sides narrow)	250 kg
Jib, movable	180 °
Platform, rotatable	180 °
Turntable rotation, max.	450 °
To be jacked up on ground slope of	16.7 ° / 30.0 °
Track drive, height- and width-adjustable	24 / 22 cm
Gradeability, max.	16.7 ° / 30.0 °
Slope angle, max.	21.0 ° / 38.0 °
Travel speed, max.	3.0 km/h

### MEASUREMENTS\*

Platform (height) (A)	1.10 m
Platform (length) (B)	1.20 m
Platform (width) (C)	0.80 m
Length (D)	8.00 m
Length without platform (E)	7.80 m
Height (F)	1.99 m
Width, min. (G)	1.58 m
Ground clearance, max. (H)	0.43 m
Track (length x width) (I)	1.92 x 0.25 m
Outrigger footprint both side wide (length) (J)	5.51 m
Outrigger footprint both side wide (width) (K)	5.60 m
Outrigger footprint one side narrow (length) (L)	7.55 m
Outrigger footprint one side narrow (width) (M)	4.30 m
Outrigger footprint both sides narrow (width) (N)	2.99 m
Outrigger plate (length x width)	0.31 m x 0.22 m

### WEIGHT\*

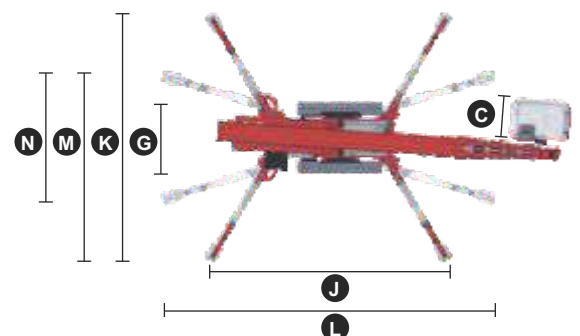
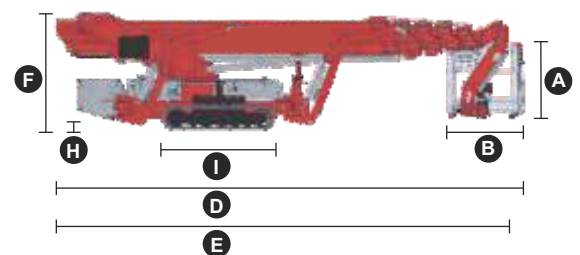
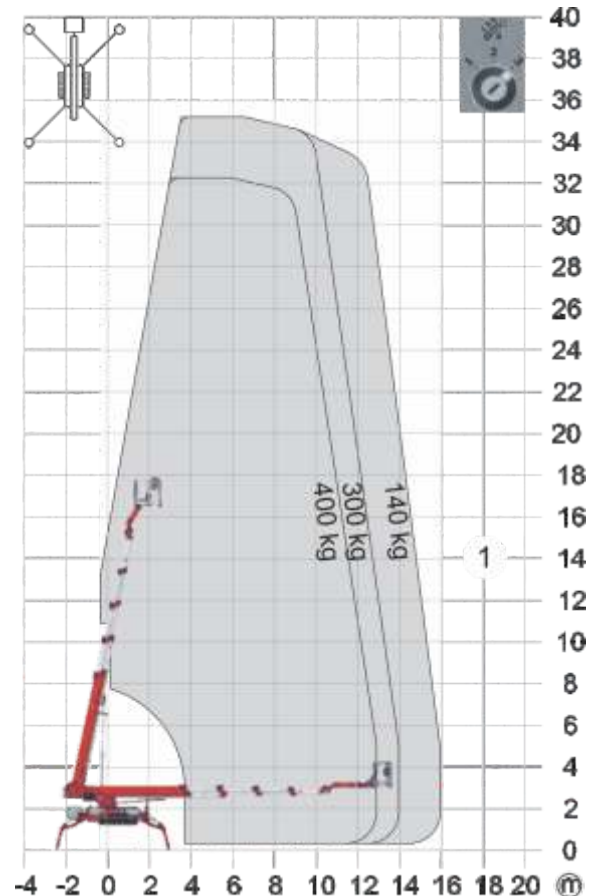
Total weight	5500 kg
Live load in travelling position	4.17 kN/m <sup>2</sup>
Live load in working position	2.16 kN/m <sup>2</sup>
Point load per outrigger plate, max.	36.00 kN

### POWER SOURCES

Standard power sources:	
Electric motor	(country-specific 1-phase)
Combustion engine (Diesel)	Kubota D902 (16.1 kW / 21.6 hp)
Optional power source:	
Battery drive (AGM)	80 V
Fuel tank capacity (Diesel engine)	39.0 l

### POWER SUPPLY

Electric current, max.	country-specific, on request
------------------------	------------------------------



### STANDARDS

Harmonised standard DIN EN 280:2016