

**FALCON  
135Z  
TRACK-MOUNTED SPIDER LIFT**



EXCLUSIVE

-----  
**SPIDER LIFTS  
AT A HIGHER LEVEL  
FOR 40 YEARS**  
-----

**FALCON 135Z  
(FALCON 44Z)**



# FALCON 135Z TRACK-MOUNTED SPIDER LIFT



## The ultimate compact platform

The Falcon has an extremely versatile boom configuration and machine compactness which make the Falcon models the best choice for maintainers, pruners, installers and hires.

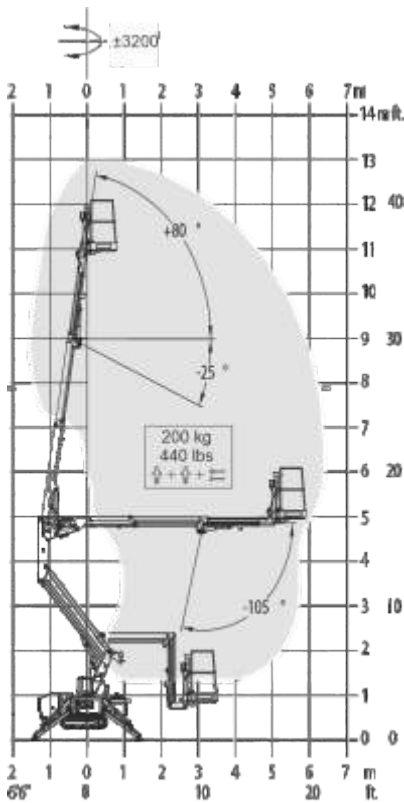
- Facility management
- Atrium access
- Narrow access
- Tree care
- Best quality & safety
- Easy transport & propelling
- Low weight & ground pressure
- Flexible outrigger setting
- Limited setup space
- Power - Bi-energy Hybrid

The Falcon is capable of passing through a door opening a mere 0.8 m (2'7") wide and 2 m (6'6") high. Further details on the Falcon 135Z (44Z) is mentioned on the following pages.

# FALCON 135Z TRACK-MOUNTED SPIDER LIFT



## Falcon 135Z (Falcon 44Z)



▲  
Working height and reach.

Model:	Falcon 135Z	Falcon 44Z
	Metric	US
Working height:	13 m	42'8"
Maximum reach:	6.5 m	21'4"
Basket load:	200 kg	440 lbs
Aluminium basket:	130x78x110 m	4'3"x2'7"x3'7"
Turret rotation:	±320°	±320°
Dimensions (transport position)		
Total height:	2 m	6'6"
Total length:	3.76 m	12'4"
Total width:	0.78 m	2'7"
Gradability:	31%	31%
Weight approx.:	1600 kg*	3520 lbs*

\*Depending on optional equipment

# FALCON 135Z

## TRACK-MOUNTED SPIDER LIFT



### STANDARD EQUIPMENT:

- Articulated boom (one element)
- Telescopic boom (main boom + extensions)
- Jib
- $\pm 320^\circ$  turret rotation
- Engine start and stop controls from basket
- Basket with aluminium guardrails
- Automatic basket levelling
- Basket load sensing device
- 4 hydraulic outriggers
- Power supply in basket
- Gradability approximately 31%
- Drive speed max 1.5 Km/h (0.9 mph)
- Electro-hydraulic steering from the ground with remote control (wire)
- AC 1.5 kW motor
- Hour meter
- Standard boom colours Grey (RAL 7035) and chassis Blue (RAL5002)
- EN 280:2013 CE Certified
- ANSI Certified

Available with one of the following engines:

- Diesel (Lombardini)
- Petrol (Honda 15 HP)

### OPTIONS:

- Dust Cover for Storage
- Nylon plates for outriggers
- Special colour
- Anti entrapment device
- Non-marking crawlers
- Air/water in basket

