

**FALCON
200Z**

TRACK-MOUNTED SPIDER LIFT



EXCLUSIVE

SPIDER LIFTS AT A HIGHER LEVEL FOR 40 YEARS

FALCON 200Z
(FALCON 66Z)



FALCON 200Z TRACK-MOUNTED SPIDER LIFT



The ultimate compact platform

The Falcon has an extremely versatile boom configuration and machine compactness which make the Falcon models the best choice for maintainers, pruners, installers and hires.

- Facility management
- Atrium access
- Narrow access
- Tree care
- Best quality & safety
- Easy transport & propelling
- Low weight & ground pressure
- Flexible outrigger setting
- Limited setup space
- Power - Bi-energy Hybrid

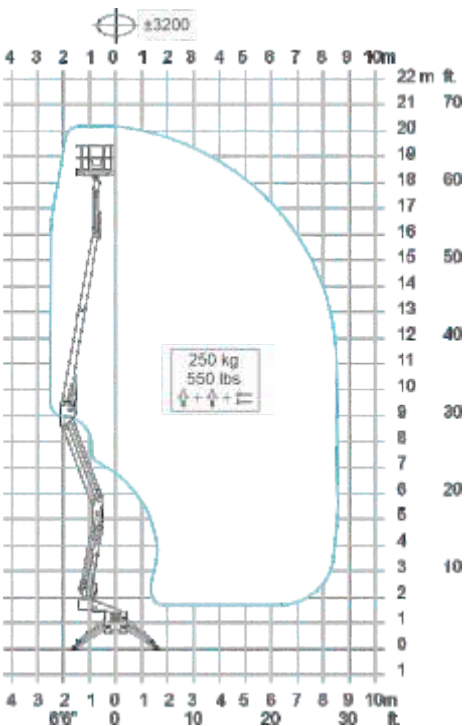
The Falcon is capable of passing through a door opening a mere 0.8 m (2'7") wide and 2 m (6'6") high. Further details on the Falcon models are mentioned on the following pages.



FALCON 200Z TRACK-MOUNTED SPIDER LIFT



Falcon 200Z (Falcon 66Z)



Model:	Falcon 200Z	Falcon 66Z
	Metric	US
Working height:	20 m	65'7"
Maximum reach:	8.5 m	27'11"
Basket load:	250 kg	550 lbs
Aluminium basket:	140x70x110 cm	4'7"x2'4"x3'7"
Turret rotation:	±320°	±320°
Dimensions (transport position)		
Total height:	2 m	6'6"
Total length:	5.324 m	17'6"
Total width:	0.78 m	2'7"
Gradability:	25%	25%
Weight approx.:	2782 kg	6120 lbs*

*Depending on optional equipment

▲ Working height and reach.

FALCON 200Z

TRACK-MOUNTED SPIDER LIFT



STANDARD EQUIPMENT:

- Articulated boom (two elements)
- Telescopic boom (main boom + extensions)
- Jib
- $\pm 320^\circ/\pm 330^\circ$ turret rotation
- Engine start and stop controls from basket
- Basket with aluminium guardrails
- Automatic basket levelling
- Basket load sensing device
- 4 hydraulic outriggers
- Power supply in basket
- Gradability approximately 25%
- Drive speed max 1,5 Km/h (0,9 mph)
- Electro-hydraulic steering from the ground with remote control (wire)
- AC 1.5 kW motor
- Hour meter
- Standard boom colours Grey (RAL 7035) and chassis Blue (RAL5002)
- EN280:2013CE Certified
- ANSICertified

Available with one of the following engines:

- Diesel (Kubota 2 cyl. water cooled)
- Petrol (Honda 15 HP)

OPTIONS:

- Dust Cover for Storage
- Nylon plates for outriggers
- Special colour
- Anti entrapment device
- Non-marking crawlers
- Basket rotation
- Air/water in basket
- Automatic stabilisation from basket