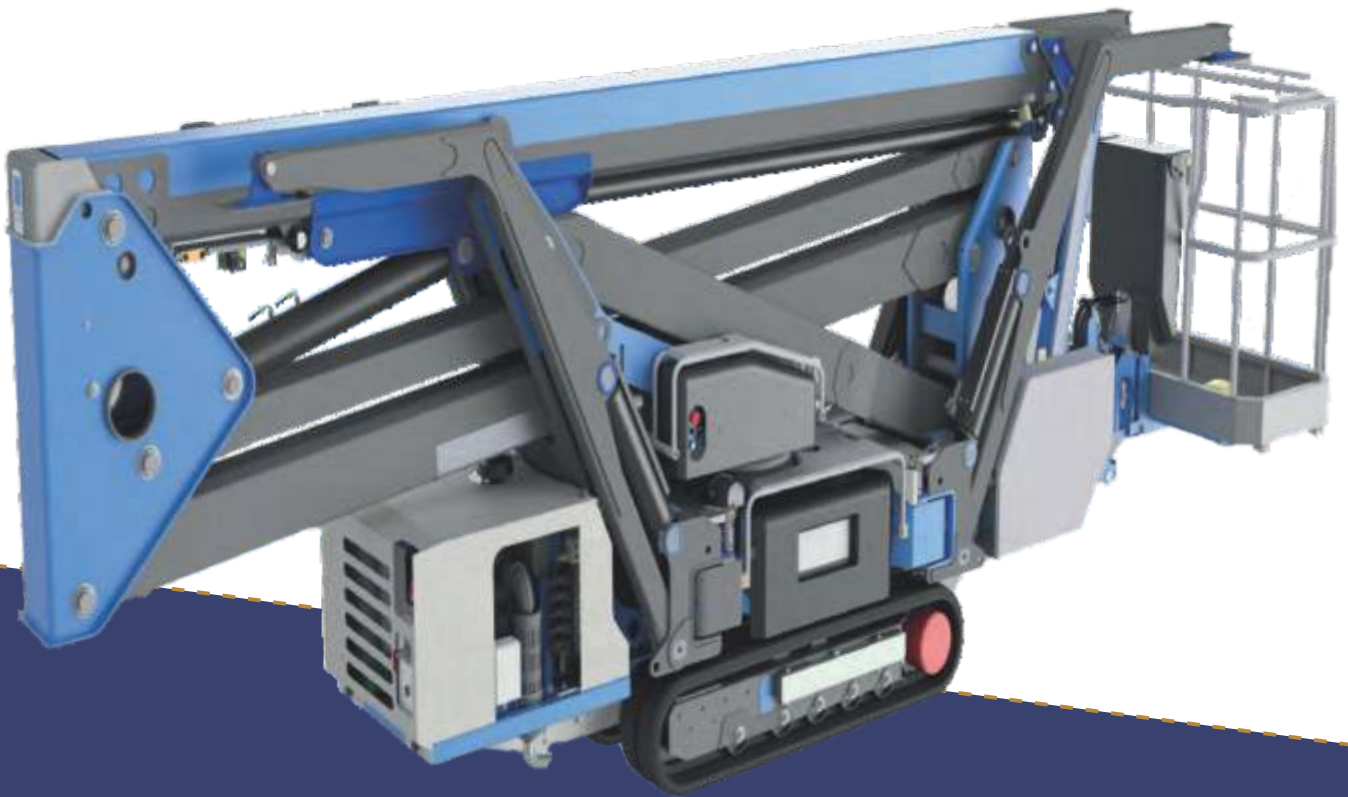


FALCON
270Z
TRACK-MOUNTED SPIDER LIFT



EXCLUSIVE

SPIDER LIFTS
AT A HIGHER LEVEL
FOR 40 YEARS

FALCON 270Z
(FALCON 88Z)



FALCON 270Z TRACK-MOUNTED SPIDER LIFT



The ultimate compact platform

The Falcon has an extremely versatile boom configuration and machine compactness which make the Falcon models the best choice for maintainers, pruners, installers and hires.

- Facility management
- Atrium access
- Narrow access
- Tree care
- Best quality & safety
- Easy transport & propelling
- Low weight & ground pressure
- Flexible outrigger setting
- Limited setup space
- Power - Bi-energy Hybrid

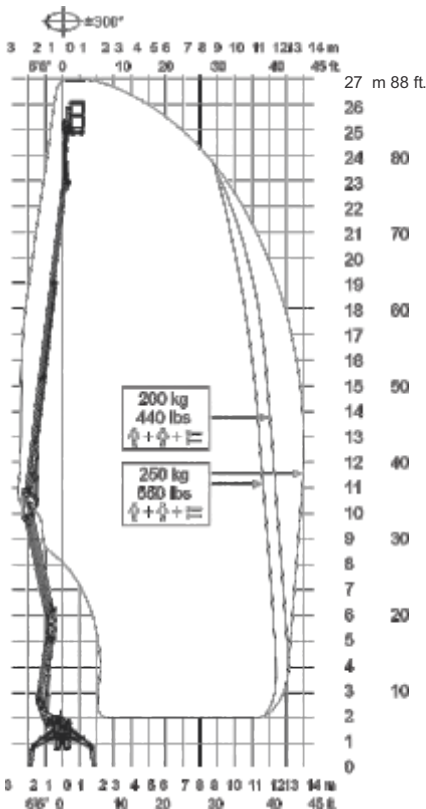
The Falcon is capable of passing through a door opening a mere 0.8 m (2'7") wide and 2 m (6'6") high. Further details on the Falcon 270Z (88Z) is mentioned on the following pages.



FALCON 270Z TRACK-MOUNTED SPIDER LIFT



Falcon 270Z
(Falcon 88Z)



Working height and reach.

Model:	Falcon 270Z	Falcon 88Z
--------	-------------	------------

	Metric	US
Working height:	27 m	88' 7"
Maximum reach:	14.0 m	45'11"
Basket load:	250 kg	550 lbs
Aluminium basket:	140x70x110 m	4'7"x2'4"x3'7"
Turret rotation:	+320° / -320°	+320° / -320°
Dimensions (transport position)		
Total height:	1.99 m	6'6"
Total length:	6.471 m	21'3"
Total width:	0.79 m	2'7"
Gradability:	28%	28%
Weight approx.:	4350 kg*	9570 lbs*

*Depending on optional equipment

FALCON 270Z

TRACK-MOUNTED SPIDER LIFT



STANDARD EQUIPMENT:

- Articulated boom (two elements)
- Telescopic boom (main boom + 2 extensions)
- Jib - raise and drive jib functionality
- $\pm 300^\circ$ non-continuous turret rotation
- Engine start and stop by remote control
- Basket with aluminium guardrails
- Basket rotation $\pm 90^\circ$
- Automatic basket levelling and self centering
- Basket load sensing device
- 4 hydraulic outriggers
- Power supply in basket
- Gradability approximately 28°
- Dual drive speed max 1.6 Km/h (1 mph)
- Wireless remote control with graphic diagnostic display
- AC 2.2 kW motor
- Flexible outrigger settings
- Extendable track width
- Hour meter
- Go home function
- Anti Crush
- Standard boom colours Grey (RAL 7035) and chassis Blue (RAL5002)
- EN280:2013CE Certified
- ANSICertified

Triple power source :

- Diesel (Kubota) + 24V DC Battery + 230/110 V AC

OPTIONS:

- Dust Cover for Storage
- Special colour
- Anti entrapment device
- Non-marking crawlers
- Air/water in basket
- GSM module for remote access and monitoring
- Winch with 230 kg/506 lbs. lifting capacity