

FALCON
320 VARIO
TRACK-MOUNTED SPIDER LIFT



EXCLUSIVE

SPIDER LIFTS
AT A HIGHER LEVEL
FOR 40 YEARS

FALCON 320 *Vario*



FALCON 320 VARIO TRACK-MOUNTED SPIDER LIFT



The ultimate compact platform

The Falcon Spider Atrium Lift is an original Falcon Spider Lift with market leading features.

The Falcon Spider Atrium Lift was invented in the 1970's, and developed ever since.

The Falcon Spider Atrium Lift FALCON 320 Vario is very applicable in matters of:

- Facility management
- Atrium access
- Narrow access
- Best quality & safety
- Double jib system
- Easy transport & propelling
- Low weight & ground pressure
- Flexible outrigger setting
- Limited setup space
- Variable crawler chassis
- Power - Bi-energy Hybrid

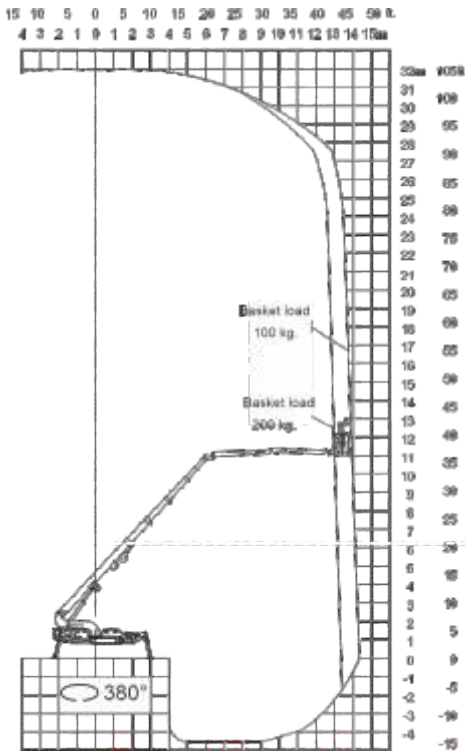
The Falcon Spider Atrium Lift is capable of passing through a door opening a mere 1.25 m wide and 1.84 m high. Further details on the Falcon Spider Atrium Lift FALCON 320 Vario is mentioned on the following pages.

FALCON 320 VARIO TRACK-MOUNTED SPIDER LIFT



Model: FALCON 320 FALCON 320 Vario

FALCON 320Vario



Working height:	32 m
Maximum reach:	14-15 m
Double jib (2 x 3 m):	6 m
Jib rotation:	200°
Basket load:	200 kg
Aluminium basket:	(0.8 x 1.4 m)
Basket rotation (option):	+/- 90°
Turret rotation:	380°

Dimensions (transport position)

Total height:	1.84-2.09 m
Total length:	7.20 m
Total width:	1.25-1.58 m
Gradability (standard):	20° / 37%
Weight approx.:	5550 kg*

*Depending on optional equipment



Working height and reach.

FALCON

320 VARIO

TRACK-MOUNTED SPIDER LIFT



STANDARD EQUIPMENT:

- Automatic stability & outreach control
- Computer controlled (can-bus)
- Proportional control of all functions
- Self-propelled
- Battery powered with charger (180 Ah)
- Double jib
- 380° turret rotation, with integrated stop
- Individual setting of each outrigger
- Electronic checking of the power system (PLC)
- Manual pump system for emergency lowering
- Ability to self-load onto trucks or trailers
- Height adjustable crawlers
- Adjustable track width 1.25-1.58 m
- Minimum width only 1.25 m
- Space for tools etc. in basket
- Storage room with lock in chassis
- Diesel engine Kubota 3 cyl. 19 kW
- Wireless remote control of all functions
- Service tool (Remote access via laptop)
- Non marking crawlers
- Slope alarm

OPTIONS:

- +/-90° basket rotation
- 220V AC power supply in the basket
- Air / water supply in the basket
- Sensor system on basket
- 400V AC Phase 3 direct powered electro motor
- 4 pcs extra batteries
- Autosetting/levelling
- Dust Cover for Storage
- Special outrigger footplates
- Basket in various sizes
- Anemometer wind warning system
- Special colour
- GSM module for remote access and monitoring
- Anti entrapment device