

FALCON
380XL-VARIO
TRACK-MOUNTED SPIDER LIFT



EXCLUSIVE

SPIDER LIFTS
AT A HIGHER LEVEL
FOR 40 YEARS

FALCON 380XL *Vario*



FALCON 380XL-VARIO TRACK-MOUNTED SPIDER LIFT



The ultimate compact platform

Compact design, flexibility, minimum weight, maximum reach and safety are qualities which users of the Falcon Spider Atrium Lift series appreciate in their daily work.

The Falcon Spider Atrium Crawler Lift FALCON 380XL Vario is an original Falcon Spider Lift with market leading features.

The Falcon Spider Atrium Crawler Lift FALCON 380XL vario has a 38 m working height, and is designed with height adjustable crawlers and enhanced basket load of up to 450kg

The Falcon Spider Atrium Lift was originally invented in the 1970's, and developed ever since. The Falcon Spider Atrium Crawler Lifts FALCON380XL Vario is very applicable in matters of:

- Facility management
- Atrium access
- Narrow access
- GSM telecommunications and electrical network upgrades
- Single jib
- Best quality & safety

- Easy transport & propelling
- Low weight & ground pressure
- Flexible outrigger setting
- Limited setup space
- Power – Bi-energy Hybrid

The Falcon Spider Atrium Crawler Lift FALCON 380XL Vario is capable of passing through a door opening a mere 1.43 m wide and 1.95 m high. Further details on the Falcon Spider Atrium Lift FALCON 380XL Vario is mentioned on the following pages.

New features such as XL-basket size and enhanced basket load of up to 450 kg, automatic outrigger positioning, steering of outrigger and chassis from the basket, turns The Falcon 380XL Vario into a product category matching the demand of today in regards to speed, usability and safety.

The variable crawler version in the Falcon Spider Atrium Lift series is recognised by its impressive driving properties and userfriendliness.

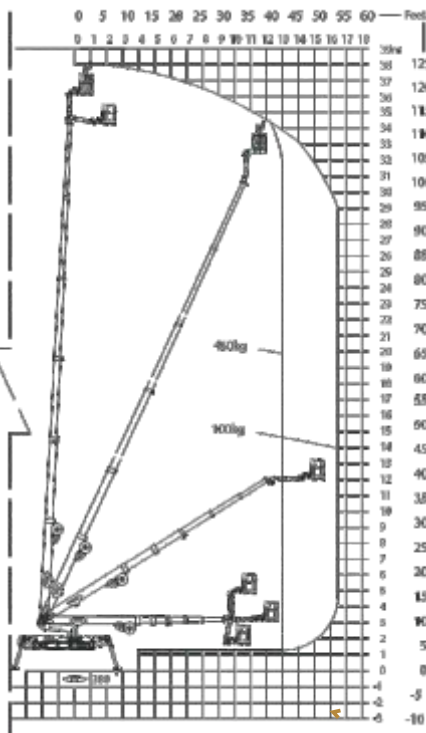
FALCON 380XL-VARIO TRACK-MOUNTED SPIDER LIFT



Model:

FALCON 380XL Vario

FALCON 380XL Vario



Working height and reach.

Working height: 38 m
Maximum reach: 13.5m - 16.5m
Jib rotation: 200°

Basket load: 450 kg

Aluminium basket: (0.8 x 2.0 m)
Basket rotation: + / - 90°
Turret rotation: 380°

Dimensions (transport position)

Total height: 1.95 - 2.23 m
Total length: 8.45 m
Total width (min): 143 - 1.72 m
Gradability (standard): 25° / 47%
Weight approx.: 8250 kg*

*Depending on optional equipment

FALCON

380XL-VARIO

TRACK-MOUNTED SPIDER LIFT



STANDARD EQUIPMENT:

- Automatic stability & outreach control
- Computer controlled (can-bus)
- Proportional control of all functions
- Self-propelled 2 speed selection
- Battery powered with charger 180 Ah
- Single jib
- 380° turret rotation, with integrated stop
- +/- 90° basket rotation
- Ability to self-load onto trucks or trailers
- Electronic checking of the power system (PLC)
- Manual pump system for emergency lowering
- Adjustable track width
- Minimum width only 1.43 m
- XL-basket 450 kg capacity
- Storage room in chassis with lock
- Kubota diesel engine, 3 cyl. 18.5 kW/ 24.8 HP (Tier 4 / EU Stage V)
- Wireless remote control of all functions
- 110V/220V AC power supply in the basket
- Non marking crawlers
- Individual setting of each outrigger
- Falcon Service Tool (remote access via laptop)
- EN 280:2013 CE Certified
- ANSI Certified

OPTIONS:

- Hazard lights kit (strobe lights, working lamp)
- Protection kit (enhanced shields/cover)
- 400V AC Phase 3, 7.5 kW/16A
- Autosetting / Leveling
- Special outrigger footplates
- Special colour
- Service tool
- Anti entrapment system
- Dust Cover for Storage
- GSM module for remote access and monitoring