

FALCON
430-VARIO
TRACK-MOUNTED SPIDER LIFT



EXCLUSIVE

SPIDER LIFTS
AT A HIGHER LEVEL
FOR 40 YEARS

FALCON 430 *Vario*



FALCON 430-VARIO TRACK-MOUNTED SPIDER LIFT



The ultimate compact platform

Compact design, flexibility, minimum weight, maximum reach and safety are qualities which users of the Falcon Spider Atrium Lift series appreciate in their daily work.

The Falcon Spider Atrium Crawler Lift FALCON 430 Vario is an original Falcon Spider Lift with market leading features.

The Falcon Spider Atrium Crawler Lift FALCON 430 vario has a 43 m working height, and is designed with height adjustable crawlers .

The Falcon Spider Atrium Lift was originally invented in the 1970's, and developed ever since. The Falcon Spider Atrium Crawler Lifts FALCON 430 Vario is very applicable in matters of:

- Facility management
- Atrium access
- Narrow access
- Best quality & safety
- Double jib system

- Easy transport & propelling
- Low weight & ground pressure
- Flexible outrigger setting
- Limited setup space
- Power – Bi-energy Hybrid

The Falcon Spider Atrium Crawler Lift FALCON 430 Vario is capable of passing through a door opening a mere 1.39 m wide and 1.95 m high. Further details on the Falcon Spider Atrium Lift FALCON 430 Vario is mentioned on the following pages.

Features such as the double jib, automatic outrigger positioning, steering of outrigger and chassis from the wireless remote control, turns the Falcon Spider Atrium Lift series into a product category matching the demand of today in regards to speed, usability and safety.

The crawler version in the Falcon Spider Atrium Lift series is recognised by its impressive driving properties and user friendliness.

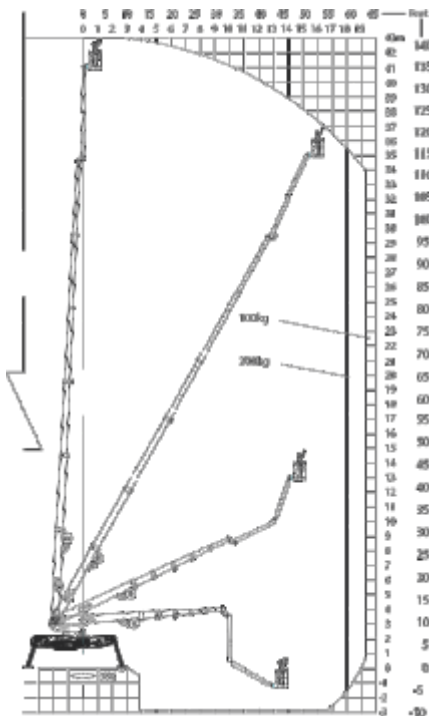
FALCON 430-VARIO TRACK-MOUNTED SPIDER LIFT



Model:

FALCON 430 Vario

FALCON 430 Vario



Working height and reach.

Working height: 43 m
Maximum reach: 16.5 - 18.5 m
Jib rotation: 200°

Basket load: 200 kg

Aluminium basket: (0.8 x 1.4 m)

Basket rotation: + / - 90°

Turret rotation: 380°

Dimensions (transport position)

Total height: 1.95 - 2.23 m

Total length: 8.28 m

Total width (min): 1.39 - 1.78 m

Gradability (standard): 25° / 47%

Weight approx.: 8340 kg*

*Depending on optional equipment

FALCON 430-VARIO TRACK-MOUNTED SPIDER LIFT



STANDARD EQUIPMENT:

- Automatic stability & outreach control
- Computer controlled (can-bus)
- Proportional control of all functions
- Self-propelled 2 speed selection
- Battery powered with charger 180 Ah
- Double jib
- 380° turret rotation, with integrated stop
- +/- 90° basket rotation
- Ability to self-load onto trucks or trailers
- Electronic checking of the power system (PLC)
- Manual pump system for emergency lowering
- Adjustable track width
- Minimum width only 1.39 m
- Space for tools etc. in basket
- Storage room in chassis with lock
- Kubota diesel engine, 3 cyl. 18.5 kW/ 24.8 HP (Tier 4 / EU Stage V)
- Wireless remote control of all functions
- 110V/220V AC power supply in the basket
- Non marking crawlers
- Individual setting of each outrigger
- Falcon Service Tool (remote access via laptop)

OPTIONS:

- Hazard lights kit (strobe lights, working lamp)
- Protection kit (enhanced shields/cover)
- 400V AC Phase 3, 7.5 kW/16A
- Autosetting / Leveling
- Special outrigger footplates
- Special colour
- Service tool
- Anti entrapment system
- Dust Cover for Storage
- GSM module for remote access and monitoring