

FALCON  
**520 DOUBLE TRACK**  
TRACK-MOUNTED SPIDER LIFT



EXCLUSIVE

-----  
**SPIDER LIFTS**  
AT A HIGHER LEVEL  
FOR 40 YEARS  
-----

FALCON 520 *Double Track*



# FALCON 520 DOUBLE TRACK TRACK-MOUNTED SPIDER LIFT



The Falcon Spider Atrium Crawler Lift FALCON 520 Double Track, the worlds tallest compact platform!

Compact design, flexibility, minimum weight, maximum reach and safety are qualities which users of The Falcon Spider Atrium Lift series appreciate in their daily work.

The Falcon Spider Atrium Crawler Lift FALCON 520 Double Track is an original Falcon Spider Lift with market leading features. This Falcon Spider Atrium Crawler Lift FALCON 520 Double Track has a 52 m working height, and is designed as a crawler model.

The Falcon Spider Atrium Lift was originally invented in the 1970's, and developed ever since. The Falcon Spider Atrium Crawler Lift FALCON 520 Double Track is very applicable in matters of:

- Facility management
- Atrium access
- Narrow access
- Best quality & safety
- Double jib system
- Easy transport & propelling
- Low weight & ground pressure

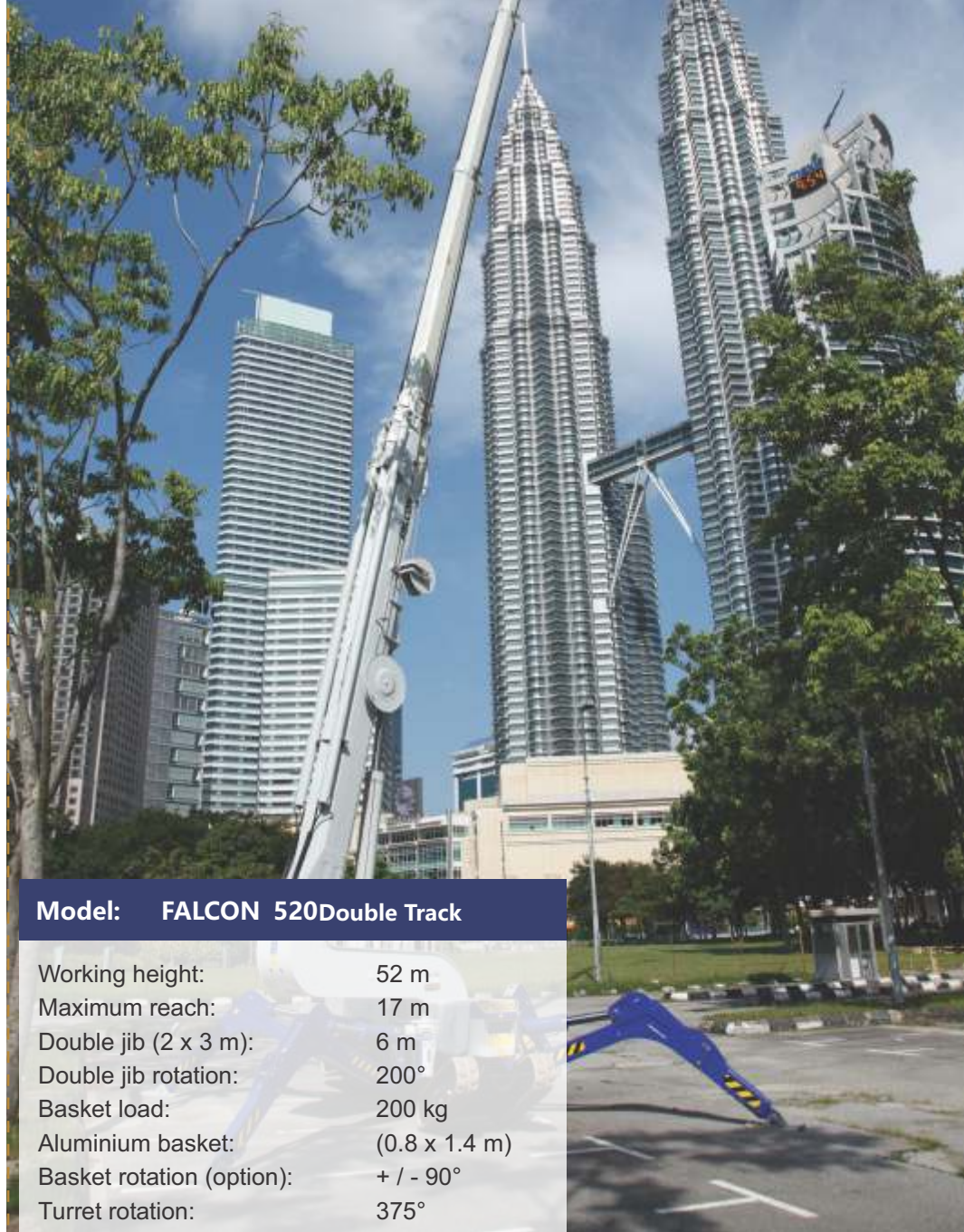
- Flexible outrigger setting
- High reach performance
- Power – Bi-energy Hybrid

The Falcon Spider Atrium Crawler Lift FALCON 520 Double Track is capable of passing through a door opening a mere 1.25 m wide and 2.10 m high. Further details on the Falcon Spider Atrium Crawler Lift FALCON 520 Double Track is mentioned on the following pages.

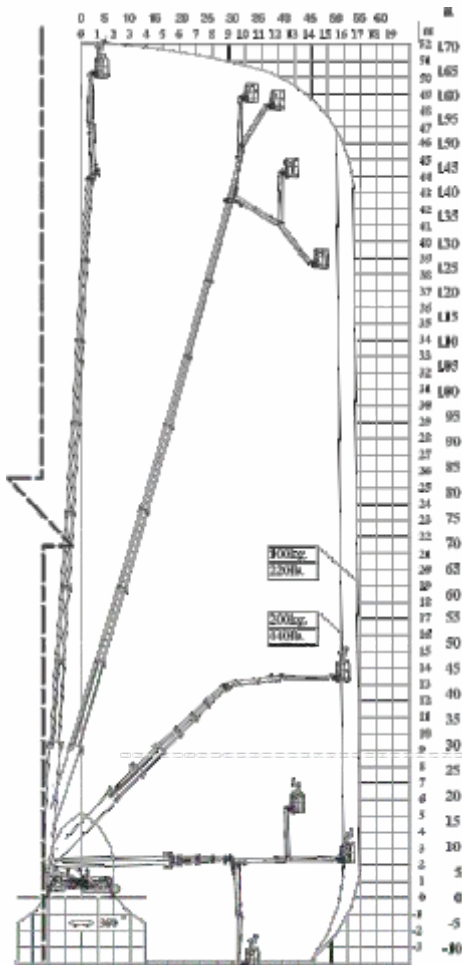
Features such as the double jib, automatic outrigger positioning, steering of outrigger and chassis from the wireless remote control, turns the Falcon Spider Atrium Lift series into a product category matching the demand of today in regards to speed, usability and safety.

The crawler version in the Falcon Spider Atrium Lift series is recognised by its impressive driving properties, superior boom flexibility and low ground pressure.

# FALCON 520 DOUBLE TRACK TRACK-MOUNTED SPIDER LIFT



## FALCON 520 Double Track



Model: FALCON 520 Double Track	
Working height:	52 m
Maximum reach:	17 m
Double jib (2 x 3 m):	6 m
Double jib rotation:	200°
Basket load:	200 kg
Aluminium basket:	(0.8 x 1.4 m)
Basket rotation (option):	+ / - 90°
Turret rotation:	375°

### Dimensions (transport position)

Total height:	2.10 m
Total length:	9.30 m
Total width (min):	1.25 m
Total width (max):	1.60 m
Gradability (standard):	20° / 37%
Weight approx.:	13.500 kg*

▲ Working height and reach.  
To the outermost points.

\*Depending on optional equipment

# FALCON

## 520 DOUBLE TRACK

### TRACK-MOUNTED SPIDER LIFT



#### STANDARD EQUIPMENT:

- Automatic stability & outreach control
- Computer controlled (can-bus)
- Proportional control of all functions
- Self-propelled
- Battery powered with charger (180 Ah)
- Double jib
- 375° turret rotation, with integrated stop
- +/- 90° basket rotation
- Individual setting of each outrigger
- Electronic checking of the power system (PLC)
- Manual pump system for emergency lowering
- Ability to self-load onto trucks or trailers
- Double crawler system
- Front crawler section adjustable
- Adjustable rack width
- Minimum width only 1.25 m
- Space for tools etc. in basket
- Storage room with lock in chassis
- Diesel engine
- Wireless remote control of all functions
- Falcon Service Tool (remote access via laptop)

#### OPTIONS:

- 400V AC Phase 3, 7.5 kW/16A
- 220V AC power supply in the basket
- Air/water supply in the basket
- Sensor system on basket
- Non marking crawlers
- Slope alarm
- 4 pcs extra batteries
- Autosetting/levelling
- Dust Cover for Storage
- Special outrigger footplates
- Basket in various sizes
- Special colour
- Anemometer wind warning system
- GSM module for remote access and monitoring
- Anti entrapment device