



# ELEVATING PLATFORMS

for Construction Industry



## ZLP Temporarily Suspended Platform

# ZLP800

Rigid "ZLP800" Temporary Suspended Platforms to Customers Spec.  
Many Optional Capacities, Platform Size, Controls and Height Of Lift.



### Description

**ZLP800 platform is intended for temporary applications for lifting people and their working equipment - at unlimited heights.**

It is designed particularly for heavy applications on facades, chimneys, silos, bridges etc.

The complete system consists of the working platform equipped with two electric LTD hoists and the support wheels, suspended by means of steel wire ropes from a suspension structure.

### Safety systems

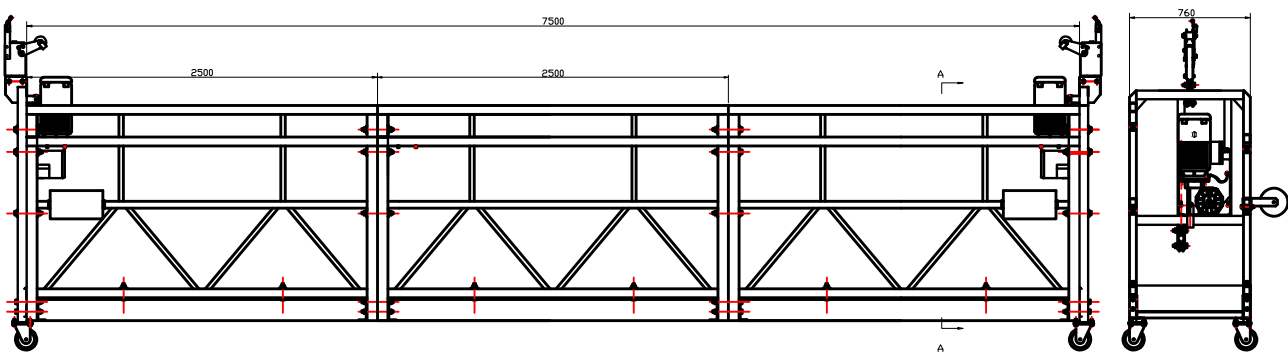
To ensure safe operation without danger to personnel, the platform is fitted with the following safety devices:

- ✧ Service brake incorporated in the LTD hoist.
- ✧ Two fall arrest devices (Anti-tilt LSF safety lock) acting on the safety wire ropes.
- ✧ Overload sensor incorporated in the LTD hoists according to EN 1808. (Option)
- ✧ Two upper limit switches.

- ☆ No power descent in case of power failure.
- ☆ Emergency stop.
- ☆ Phase controller. [Option]

## Technical Information

**It is designed particularly for heavy applications on facades, chimneys, silos, bridges etc.**



### The main para. Of ZLP800 suspended platform:

- ☆ Rated Load: 800kg
- ☆ Lifting Speed: 9.3m/min
- ☆ Voltage-3Phase: 380V/ (415V/220V)
- ☆ Frequency: 50Hz/60Hz
- ☆ Power: 1.8kw×2
- ☆ Hoist: LTD80
- ☆ Safety Lock: LSF309
- ☆ Dia. of Wire Rope: 4×31SW+FC-9.1mm
- ☆ Platform Size: (2.5×3)×0.76×1.45m
- ☆ Weight of Suspension Jibs: 340kg
- ☆ Weight of Lifting Part: Aluminum340kg/Steel 520kg
- ☆ Counter Weight: 1000kg
- ☆ 20' GPQty of Package: 8

## Platform Suspension

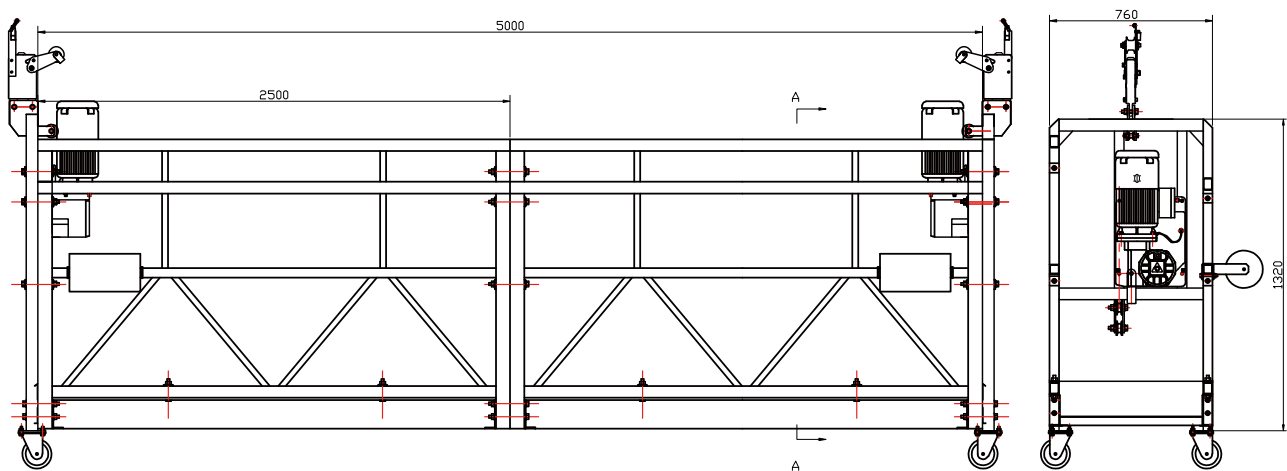
The different variants are to be distinguished by their suspension principles. Three different stirrups allow to choose the platform the best to your requirements (type of work, type of building, maximum loads, number of persons).

### End stirrup:

Fitted at the ends of the platform.

### Advantages:

The most economical and lightweight version, although showing extraordinary performances.

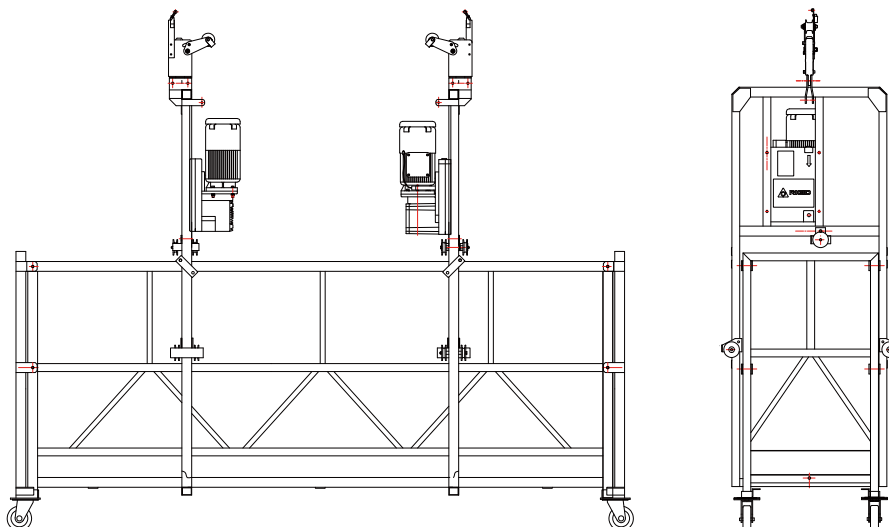


### "Frame" stirrup:

Slipped over the platform like a "frame".

### Advantages:

The ends of the platform and therefore the building corners are clear and can be easily accessed, exchangeable with the upper part of the end stirrup.

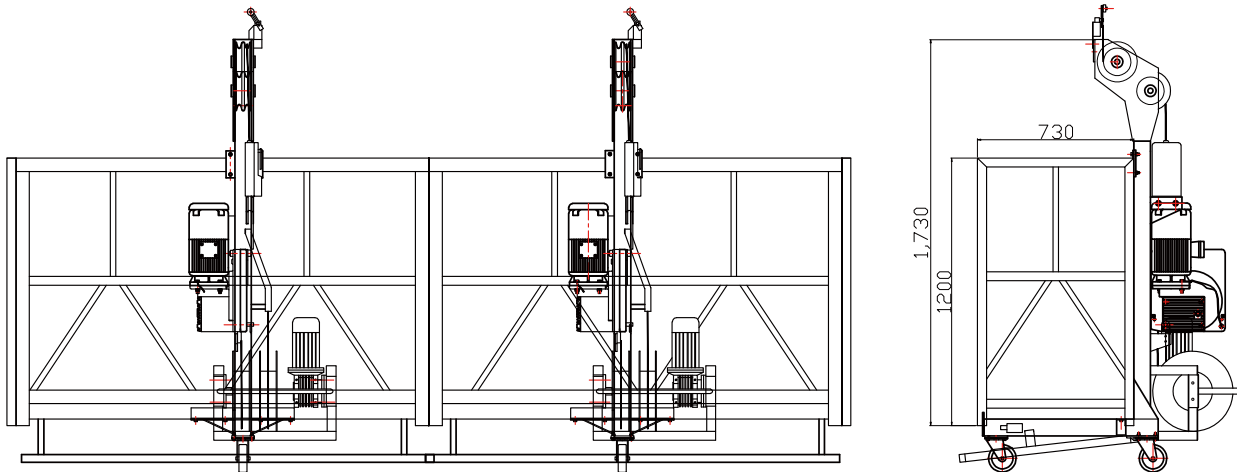


### “L” stirrup:

Placed at the rear of the platform behind the workers.

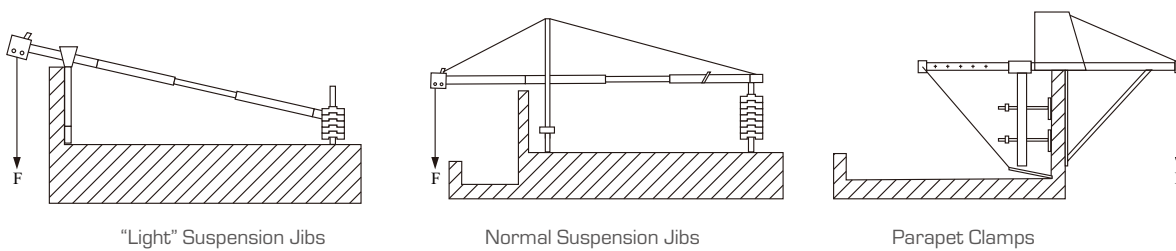
### Advantages:

The working surface is completely clear and the whole façade can be easily accessed.



## Anchoring Options

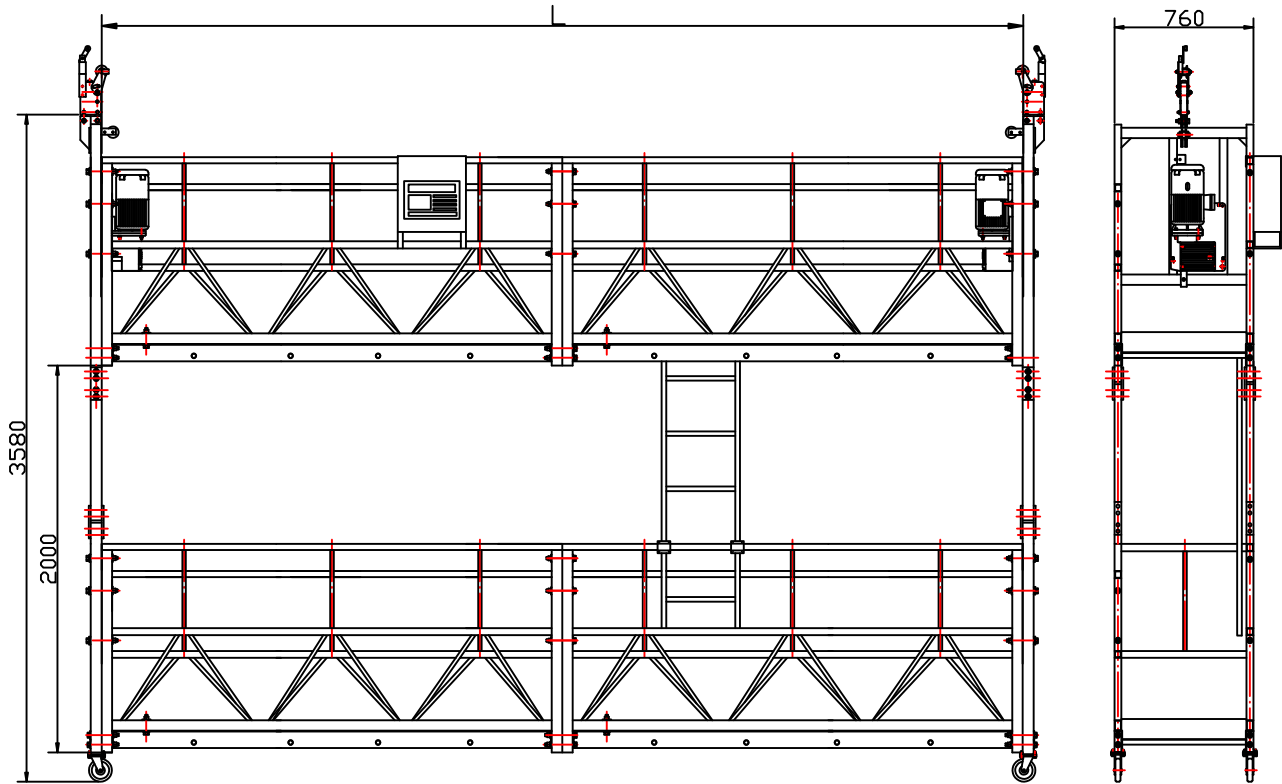
The platform applies to all types of suspension which are manufactured according to the current standards and recommendations. The EN 1808 stipulates a safety factor of 3 for anchor points and suspension structures. Rigid offers a complete range of suspension structures which can be fitted on different types of roofs: the suspension jibs or the parapet clamp.



In most applications, it is possible to use a system of mobile suspension jibs in the roof for the attachment of temporary suspended platforms.

## Double-Deck Platform

The ZLP platform can be easily transformed in a double-deck platform using especially designed attachment rods.



**ALIMAK**



**CONSTRUCTION HOIST**

## **ALIMAK SC 45/30**

Access anytime, anywhere

## An economic, high-efficiency construction hoist

The Alimak SC 45/30 is designed for passenger and materials transport. The Alimak SC 45/30 offers, efficiency, safety, reduced energy consumption and low operating costs, making it the ideal hoist solution for construction and rental companies.

A modern microprocessor hoist control system with stop-next-landing control allows for simple operation and ease of use. The Alimak SC 45/30 is capable of sharing a mast with the Alimak medium range of transport platforms, materials hoists and mast climbing work platforms, improving utilisation of machine accessories and increasing transport capacity in a cost-effective way.

### MAIN CHARACTERISTICS

#### Safety

Fitted with a safety device, overload sensor, and mechanical interlocking door system to guarantee the highest safety standards.

#### Reliability

High strength steel extends equipment life and reduces dead weight; With a robust design, based on proven Alimak technology, the Alimak SC 45/30 is a reliable hoist solution that delivers when you need it to.

#### Efficiency

A high-efficiency helical gearbox affords (30%) lower power consumption and operating costs, compared to competitor hoist products. Built-in electrical cabinet maximises internal hoist dimensions for increased lifting capacity.

#### Ergonomic Design

Superior operator comfort with a robust design for equipment durability; a choice of door and ramp options ensure maximum usability; easy to use stop-next-landing control system allows for simple operation; LED-light in cage for maximum usability and operator comfort; optional installation crane and single or dual cage available.



**Economical**

Low cost of ownership for construction and rental companies through durability, accessibility and easy installation and dismantling.

**Smooth Operation**

Frequency control provides smooth starting and stopping with a low starting current and less wear and tear.

**Robust Design**

A robust car design with a choice of door and ramp options ensure maximum usability and extended equipment life.

**Proven Technology**

An easy-to-use control system, based on proven Alimak technology, allows for simple operation and ease of use.



## Quality, energy-efficiency and low-cost ownership

### **RACK AND PINION**

Alimak is the global leader in rack and pinion drive technology, with more than 50 years' experience in the innovation of high-quality rack and pinion products designed to meet client requirements. The Alimak SC 45/30 is engineered and manufactured to Alimak's exacting standards, delivering reliability, energy efficiency and durability in even the toughest working conditions.

### **FLEXIBILITY OF DESIGN**

The Alimak SC 45/30 offers flexibility of design, with three available door options: a vertical door, bi-folding door or vertical door with load ramp. The load ramp allows for quick and easy loading of materials and requires no special landing bridges.

### **ENERGY-EFFICIENT DRIVE UNIT**

A high-efficiency helical gearbox provides lower power consumption and reduced operational costs.

### **VARIABLE FREQUENCY CONTROL**

Variable Frequency Control (FC) provides smooth starting and stopping, with a low starting current, less wear and tear and improved landing accuracy. A range of voltage options are available to suit any client power requirement.

### **EXTENDED EQUIPMENT LIFE**

The Alimak SC 45/30 uses lighter and stronger galvanised steel mast sections and tie-ins. A centrally located rack balances the force between mast pipes and guide rollers, ensuring even equipment wear and extending operational life.

### **REDUCED POWER CONSUMPTION**

New design and materials provide stronger, lighter and more compact cage design for reduced power consumption. A fixed cage frame and welded cage walls lengthen machine service life, while reducing noise and vibrations.

### **EASY INSTALLATION AND DISMANTLE**

No special tools are required, and four lifting eyes are located on the car roof and two on the drive unit for easy installation and dismantle. This ensures a cost-effective and user-friendly hoist solution.



## Technical specifications

Alimak SC 45/30	DOL	FC
Max. payload capacity	2000 kg [4,409 lbs]	2000 kg [4,409 lbs]
Traveling speed	36 m/min [118 ft/min]	0~60 m/min [0-197 ft/min]
Max. lifting height*	150 m [492 ft]	180 m [591 ft]
Car width, internal	1.4 m [4' - 7 1/8" ]	1.4 m [4' - 7 1/8" ]
Car length, internal	3.0 m [9' - 10 1/8" ]	3.0 m [9' - 10 1/8" ]
Car height, internal	2.13 m [7']	2.13 m [7']
Motor control	DOL	FC
No. of motors	2	2
Power supply	8.5 KW	16.4 KW
Safety device type*	SAJ40-0.9 or Alimak GF	SAJ40-1.4 or Alimak GF
Mast section dimensions	450 mm [l] x 450 mm [w] x 1508 mm [h], [1' - 5 3/4" x 1' - 5 3/4" x 4' - 11 3/8"] tubular steel with integrated rack	450 mm [l] x 450 mm [w] x 1508 mm [h], [1' - 5 3/4" x 1' - 5 3/4" x 4' - 11 3/8"] tubular steel with integrated rack
Rack module	5	5

\*Increased lifting height on request.

## Improved performance for passenger and material lifting

The Alimak SC 45/30 is the latest hoist to be upgraded for goods and passenger vertical transportation. Upgrades to the doors of the SC 45/30 and enhanced drive unit technology improves hoist operation, ensuring its safety and reliability with the added benefit of lowering your total cost of ownership.

### HIGHER QUALITY STANDARD WITH ALIMAK TECHNOLOGY

1. Optional European components available, safety device, gearbox and electrical components for main-panel
2. Upgraded cable routing and sign placement inside the hoist for easier visibility
3. New roller assembly design, made from durable cast iron material
4. Additional idler roller, placed on the back of the cage, enhances stability for a smoother ride



1



2



3



4

## UPGRADED DOOR DESIGN WITH IMPROVED RELIABILITY AND SUSTAINABILITY

1. Lighter door made from Aluminum, for increased sustainability
2. Lighter and Shorter manual bridge on vertical sliding door for efficient operation
3. Bi-parting door lock safety cover to prevent accidental touch
4. Updated mounting design of the door limit switch to protect it from damage, increasing switch life span
5. An additional latch ensures stability of the hoist cars roof hatch

## UPGRADED DRIVE UNIT DESIGN WITH LOWER TOTAL COST OF OWNERSHIP AND LONGER LIFE TIME

6. New and improved drive unit with anticorrosion, rust proof galvanized steel frame. The drive unit occupies less space on the roof for easier maintenance
7. New stainless steel design of VFC resistor for increased resistance, with better heat dissipation and reliable performance.
8. Easy assembly and maintenance of aviation plug used for cable inlet of electrical panel on drive unit.
9. New motor attached SNL encoder, that does not require a pinion, improves landing accuracy



## About Us

Established in 1974 as one of the earliest subsidiaries of **Mtandt Group**, **JM Service** has been a trusted provider of safe, efficient, and cost-effective access solutions through the sale and rental of Rope Suspended Platforms and Material & Passenger Hoists. With over five decades of industry experience, we cater to the needs of high-rise construction, facade maintenance, industrial plants, and infrastructure development projects across India.

Rooted in **Mtandt's legacy** of innovation, safety, and customer-centricity, **JM Service** combines deep product knowledge with strong on-ground execution to deliver solutions that are reliable, regulation-compliant, and performance-driven.

### JM SERVICES

GK Terminal, Floor 1 & 2 Poonamallee High Road, Nerkundram Chennai - 600107

[equipment@mtandt.com](mailto:equipment@mtandt.com) | 9090 1010 65 | [www.mtandt.com](http://www.mtandt.com)