



Tactical Safety for Access & Falls

Engineered Fall Protection Solutions



WHY

Do You Need a

FALL PROTECTION SYSTEM?

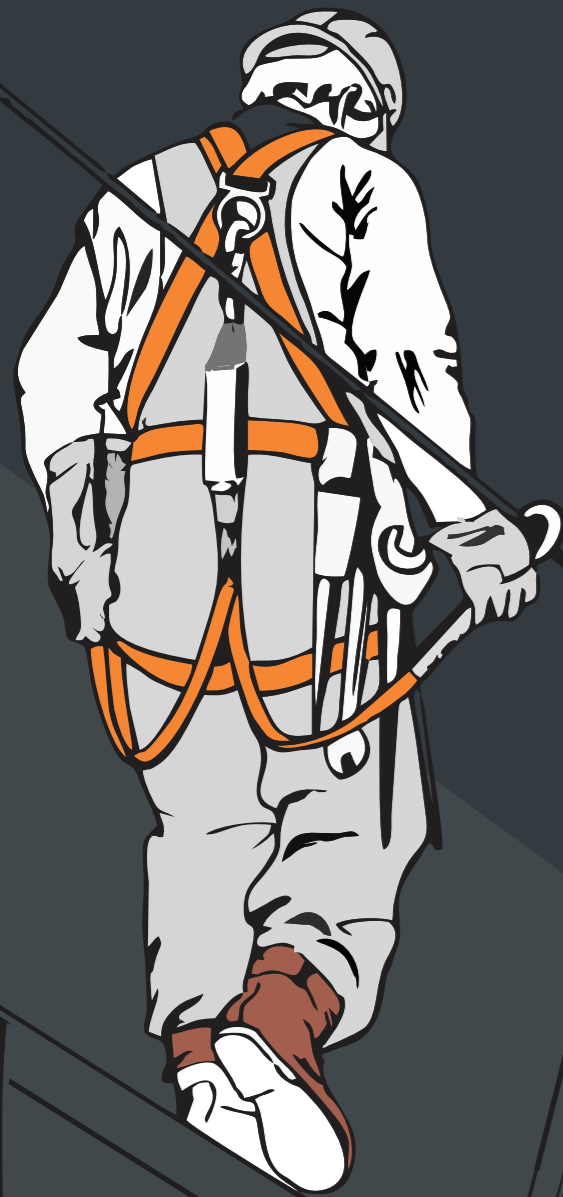


In almost every industry, there are areas where the workers are subjected to **fall hazards**, this includes high vertical distance, fragile roofs, deterioration of roof materials, unprotected edges, climbing top of trucks/tankers, unstable/poorly maintained access equipment such as ladders, weather, and falling materials.

Accidents can be prevented by adopting safe methods of working at heights. In such circumstances, **TsaF's lifeline systems are your next line of safety** for fall protection and prevention. Installed lifeline systems **arrest** workers in the event of a fall (Active System) or **restrain** workers from reaching a fall hazard (Fall Restraint).

Employers must **take due precautions** to keep their people safe from all potential fall hazards, such as holes, skylights, and leading edges, then plan and **select a suitable fall protection equipment/system** for the proposed work.

When **employers prioritize safety** and **employees follow safety guidelines**, the results are clear: improved work quality, greater competence, and increased productivity. Most importantly, it **reduces accidents and minimizes downtime** - protecting both workers and the bottom line.



What Is TsaF?



TsaF - Tactical Safety for Access & Falls is India's leading manufacturer of **Fall Protection Systems**, brought to you by the **Mtand Group**. With over 50 years of experience, our expert engineers and professionals are committed to making work-at-height **safe, reliable, and cost-effective** for our clients and their teams.

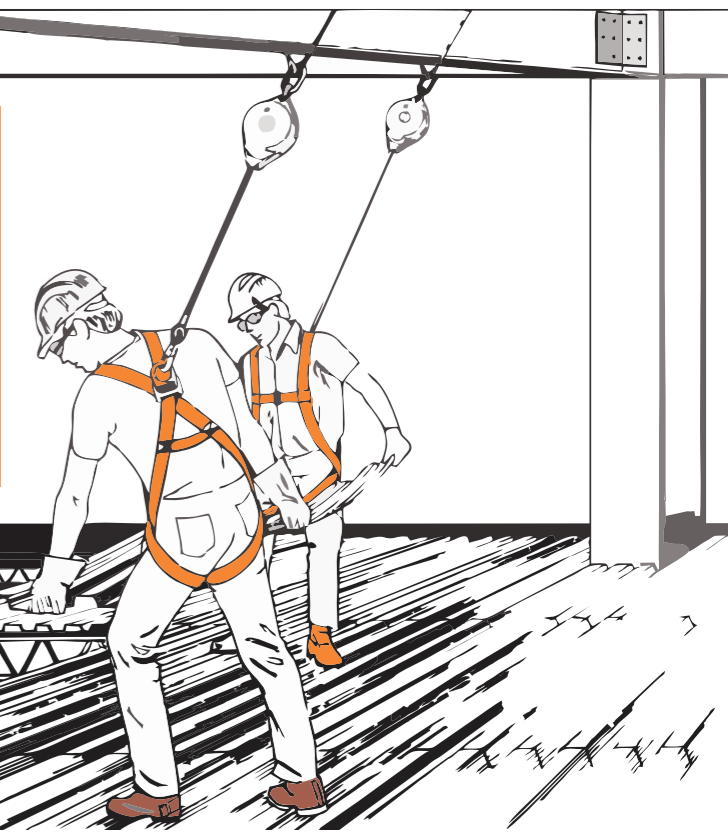
As a trusted partner in safety, TsaF provides a comprehensive range of fall protection solutions, including **Horizontal, Vertical, and Overhead Lifeline Systems**, as well as **Customized Barricade, Skylight Mesh, Aluminum Walkway, and Personal Protective Equipment (PPE)**. To further support your team's safety, we offer complete training and certification programs to ensure your workforce is fully prepared to work securely at height.

TsaF stands out as a pioneer in the safety industry by delivering **end-to-end services**-from site inspection and equipment supply to custom design, execution, and ongoing maintenance. Our solutions cater to diverse industries, from **pharmaceuticals to power, telecommunications to transmission lines, and warehousing to oil & gas**.

Our protection systems are **custom-designed to meet your unique site requirements** and adhere to **national and international safety standards**, including EN/CE and ATEX approvals. This guarantees compliance and ensures your workforce returns home safely every day.

When you choose TsaF, you're not just investing in safety-you are investing in **trust, efficiency, and productivity**. That's why **TsaF is the industry's first choice for fall protection solutions**.

According to the **World Health Organisation (WHO)** falls are the **second leading** cause of unintentional work-related injuries and deaths.



What Makes TsaF FIRST CHOICE FOR INDUSTRIES?

Types of FALL PROTECTION SYSTEM



End-To-End Customization

We know that each site is unique and presents a different challenge. Thus, with our experience across various sectors and projects, our team is committed to offering you custom solutions.

“Making safety a reality and not a fatality.”

Crafted With Safety & Quality

Our solutions are developed with extensive research and crafted down to ±0.01% precision which offers significant advantages in safety and productivity. The engineered systems meet specific applications, including connection point, connection type, and many users, and are rigorously tested to meet EN/CEN (European) Standards.

“We do not compromise with human lives. Period.”

Certified Technical Team

Our team of professionals is certified by the training body Capital Equipment Service Limited (CESL), which enables them to take the utmost precaution when carrying out the installation work at your facility whilst adhering to HSE laid Quality and Safety parameters.

“Safety can distinguish you,
Lack of safety can extinguish you.”

Strict Adherence To Global Standards

Operator Certified to ISO 9001:2015
System Certified to classes

- EN 353-1:2014+A1:2017
- EN 795:2012 CLASS C
- EN 353-2:2002
- CEN/TS 16415:2013

“When your life is at risk,
reward yourself with security.”

On-Site Training

Our work does not end with just installation. We train and certify your workforce on proper work procedures. Our courses impart the technical knowledge required to Operate, Maintain, and Service the systems periodically through rigorous training.

“Be a safety hero. Score an accident zero.”

VERTICAL Lifeline System



A Fall Arrest System that facilitates workers to climb up and down on vertical surfaces with latched safety.

HORIZONTAL Lifeline System



A Fall Arrest or Restraint System that facilitates people to work on a narrow, edged, flat or sloped roof.

OVERHEAD Lifeline System



Designed for safety at loading /unloading bays, and for workers atop vehicles/equipment.

TSaF Walk



A lightweight, anti-slip aluminum walkway system for safe rooftop navigation.

BARRICADE System



A Guardrail System ensures safety by preventing falls from roof edges and safeguarding high-risk areas.

SKYLIGHT Mesh



A Skylight Mesh System provides fall protection by securing skylights ensuring worker safety.

SAFETY Barrier System



Ensure safety with our sturdy and dependable barrier solutions.

FLOWLOCK Ladder System



A lightweight vertical access system with anti-slip rungs guide rails and self-guiding fall arresters.

Vertical LIFELINE SYSTEM

Going to great lengths to ensure your safety.



Many accidents related to ladders are preventable with the use of vertical lifeline and fall-protection rope grab systems. TsaF's **Vertical Lifeline Systems** is designed to enhance **ladder safety, climbing mobility, and productivity** for workers when climbing structures such as **Wind turbines, Communication towers, Chimneys, Warehouses, and Oil storage tanks.**

Choose from a variety of safety ladders and vertical lifeline system designs available to fit specific tasks and job site requirements.

Apart from this TsaF also offers Portable Ladder which is generally used at WTG sites (Wind, Turbine, Generator), Transmission/distribution poles, and telecom towers.

BENEFITS

- Safe, convenient and reliable personal fall protection.
- Durable, high-strength, corrosion-resistant system.
- Trained professional installation and maintenance-free longevity.
- Easily connects to your existing monkey ladder system.
- Enables mobility up and down the entire height of the line.
- Eliminate the need to disconnect and find a new tie-off point.
- Mobility to climb while maintaining an anchor point above D-ring.

CERTIFICATIONS

EN 353-1:2014 A1:2017 (Module D)	IS 3521 (PART 4): 2021 (CM/L-8800166219)	COC-(2014/34/EU) ATEX Directive
-------------------------------------	---	------------------------------------

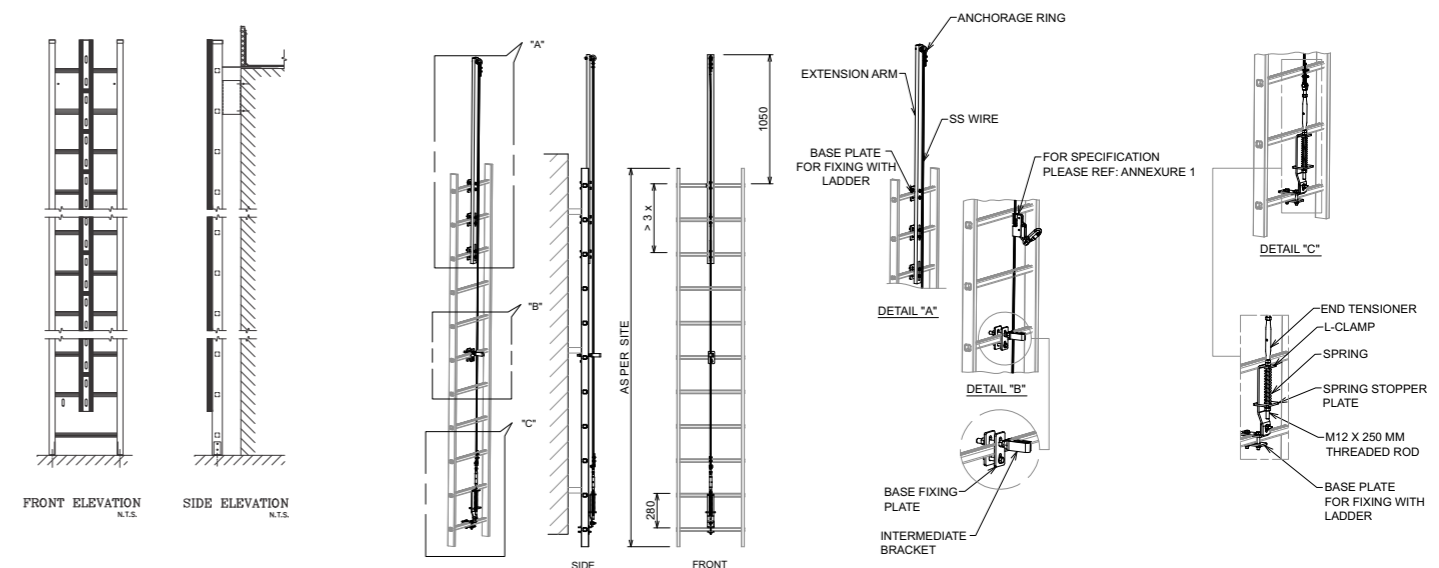
Every second matter, when working at heights, one needs a fall protection plan that is effective and reliable.



RIGID TYPE



FLEXIBLE TYPE



APPLICATIONS



Power Transmission Towers



Communication Towers



Oil Rigs & Platforms



WTG Towers (Wind, Turbine, Generator)



Storage Bins & Silos



Refinery/Chimneys Flair Stack



Boiler & Cooling Tower

Horizontal LIFELINE SYSTEM

A strong connection, to give you greater performance.



Fall accidents are one of the biggest causes of occupational fatalities in the **Construction, Maintenance, Utilities, Oil & Gas, and Power** sectors. TsaF's Horizontal Lifeline System provides your employees with the fall safety equipment they deserve, which is safe, reliable, and comfortable.

We also provide a **Skylight Mesh**. This is a metal screen used on skylights, to prevent accidental falls while working on the roof solar panels/roof maintenance. This can be customized as per site requirements.

Our broad selection of Horizontal Lifeline Systems ensures mobility, safety, and productivity across various applications with precision engineering to meet site-specific needs. The fall restraint and fall arrest system properties of horizontal lifelines are an integral part of this system.



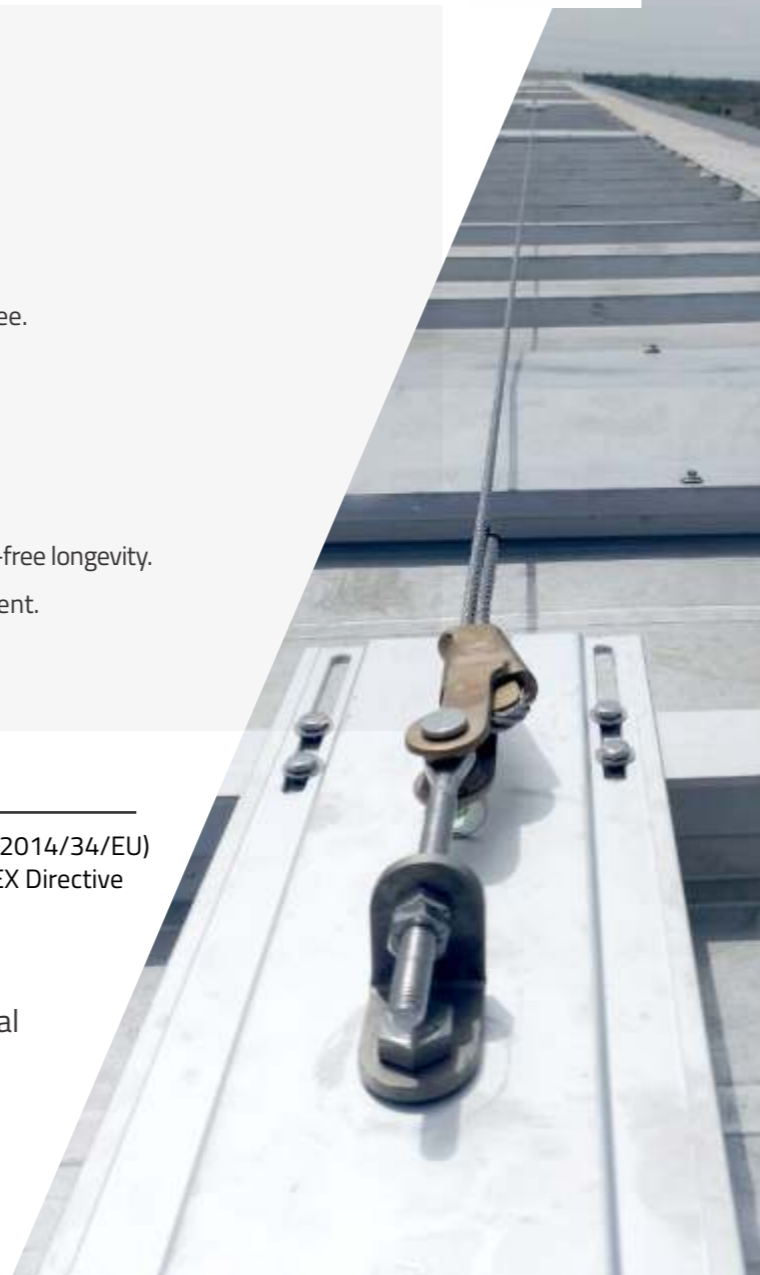
BENEFITS

- › Inspection, maintenance, and repair activity can be carried out on rooftops, by multiple teams at all times with 100% safety.
- › Horizontal lifeline systems with automatic pass-through eliminate the need for workers to un-clip from the HLL to move past intermediate anchor points, thus keeping both hands free.
- › Lighter than fabricated steel solutions.
- › Easier navigation around corners and building contours.
- › Double lanyard with a safety harness.
- › Durable, high-strength, corrosion-resistant system.
- › Trained professional installation, customized, and maintenance-free longevity.
- › Dedicated pathway for repair & maintenance of roof equipment.
- › Fall protection coverage across a wide range.

CERTIFICATIONS

EN 795:2012 (Type C)	IS 3521 (PART 8): 2021	COC-(2014/34/EU)
CEN/TS16415:2013	(CM/L-8800166118)	ATEX Directive

When working on a roof, the use of TsaF Horizontal Lifeline System eliminates falls, and trips.



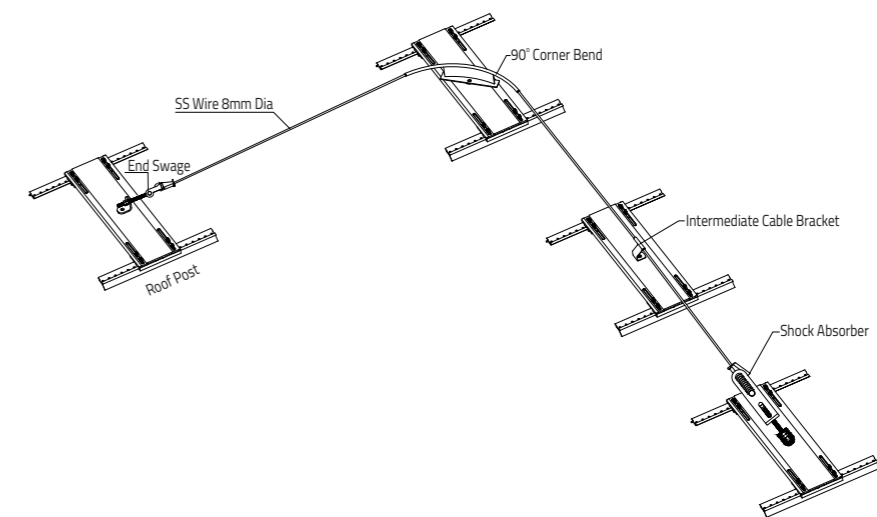
SCREW DOWN



STANDING SEAM



CROSS TYPE ROOF POST



APPLICATIONS



Roof Top-Flat/Sloped



Aircraft Hangar



Stadium/Arena



Constructions



Solar Panel Maintenance

Overhead LIFELINE SYSTEM

Secure connection for confidence while working.



Specific industries must be fitted with the Overhead Lifeline System to allow workers to loading & unloading bays. In the event of a fall, after fall arrest, the person will be either lowered or rescued accordingly.

TsaF's Overhead Lifeline System provides a versatile yet economical fall protection solution to the most challenging fall hazards. It enables workers to safely

span long distances without needing to stop and re-attach to a new anchor point.

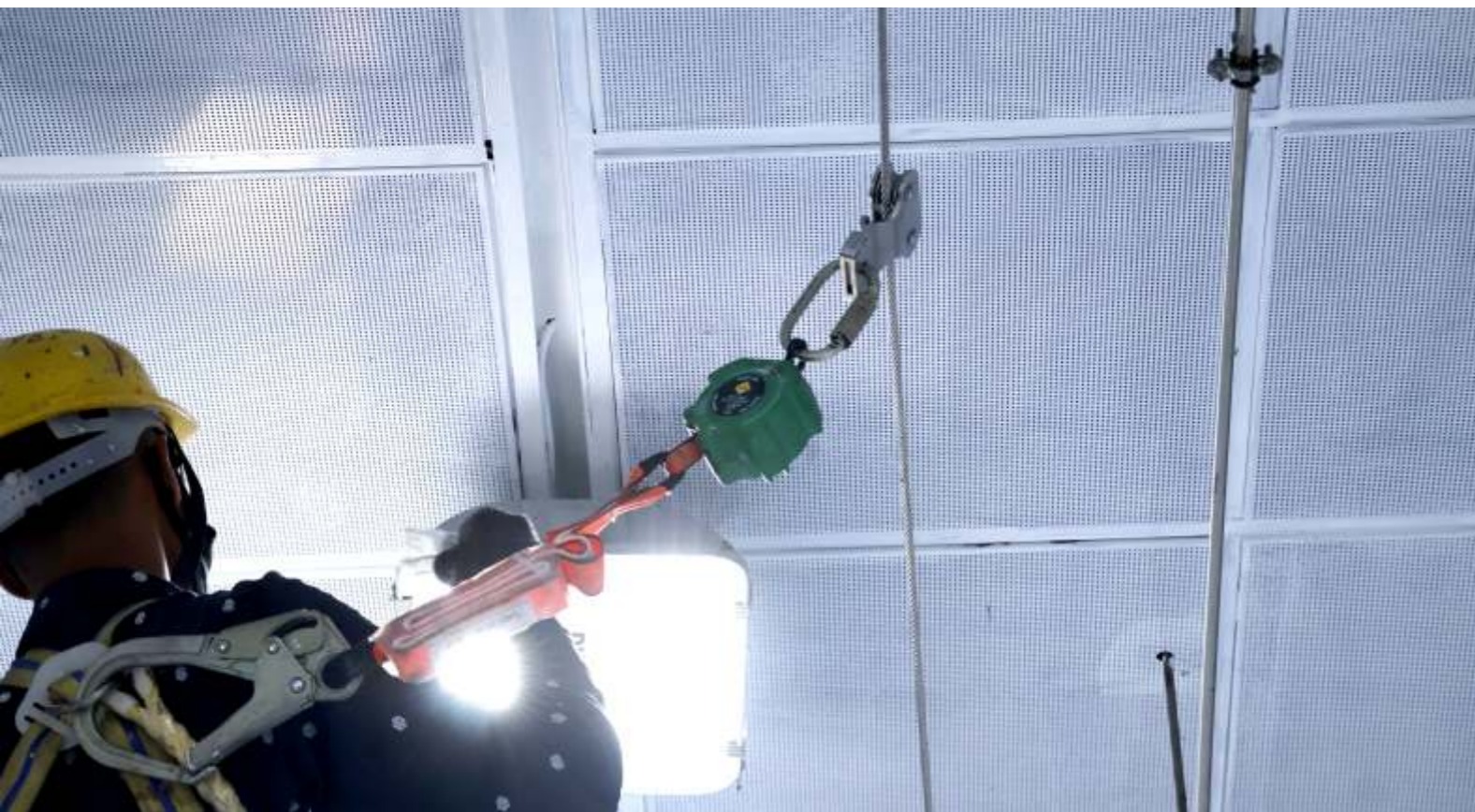
Engineered to meet the specific needs of the Transport, Industrial, Entertainment, Oil & Gas, Manufacturing and Warehouses, etc. it enables safe work at heights to be carried out on trucks, trains, aircraft, crane walkways, and loading bays while solving access and safety problems.

BENEFITS

- › Easy, continuous, hands-free mobility.
- › Supports self-retracting lifelines.
- › Customized, safe, convenient, and reliable personal fall protection.
- › Lighter than fabricated steel solutions.
- › Durable, high-strength, corrosion-resistant system.

CERTIFICATIONS

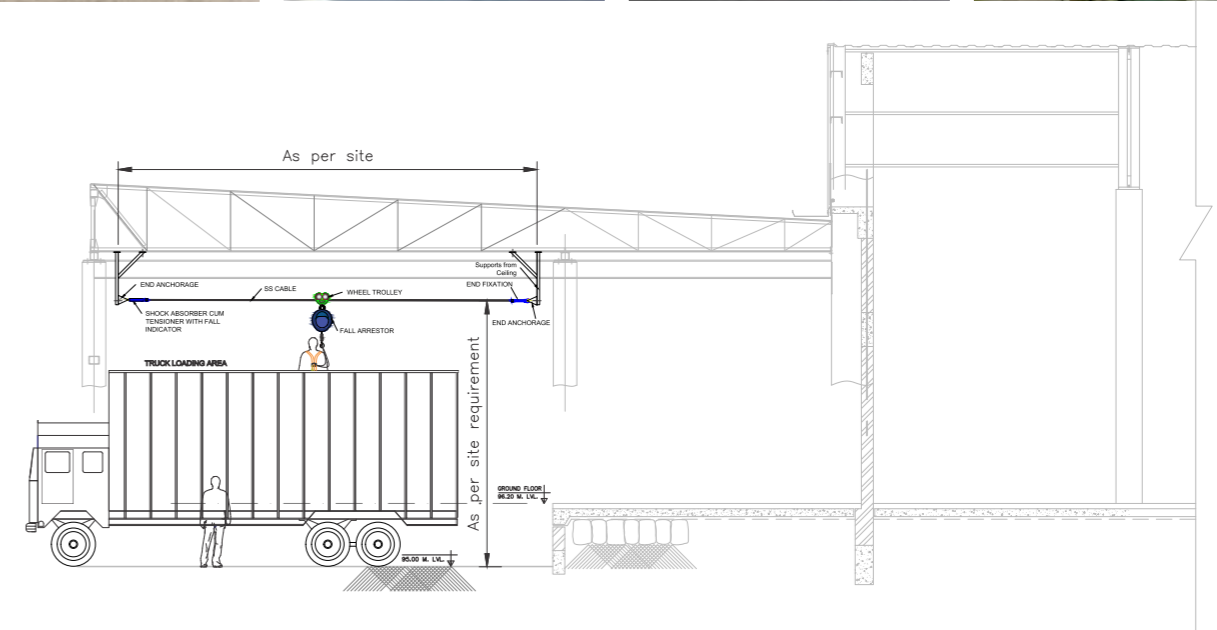
EN 795:2012 (Type C)	IS 3521 (PART 8): 2021	COC-(2014/34/EU)
CEN/TS16415:2013	(CM/L-8800166118)	ATEX Directive






OVERHEAD LIFELINE (OUTDOOR)



OVERHEAD LIFELINE (INDOOR)



APPLICATIONS

- 
 Truck/Tanks
Loading & Unloading
- 
 Railway
Loading & Unloading
- 
 Working Over
Machinery
- 
 Pipe Racks
- 
 Crane Rails



It is essential to provide a safe access way for personnel working on roofs. TsaF's Walk (Aluminium Walkway System) **provides permanent and safe access across fragile/slippery roofs**, capable of withstanding multiple users' weight. We have installed Aluminium Walkway Systems that are used for various applications in **Residential, Commercial, and Industrial Buildings**.

A simple solution to provide safe access when traversing on a **Flat, Inclined, Curved, or Pitched Roof**. It can be used as a collective measure with handrails. It allows your facility team to carry out scheduled cleaning, repair, and maintenance tasks.

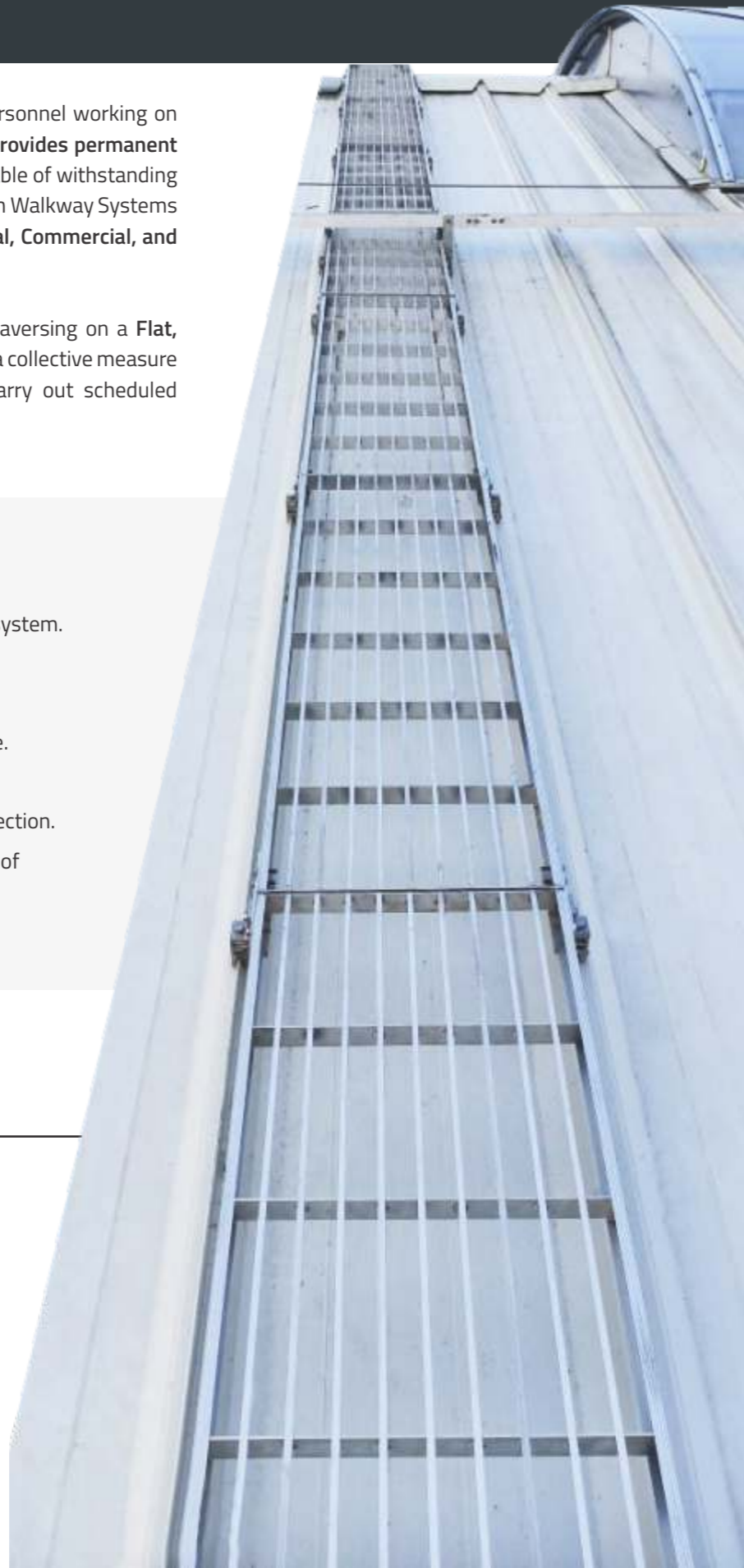
BENEFITS

- › High-strength, corrosion-resistant aluminium system.
- › Lighter than fabricated steel solutions.
- › Grated thread traction, non-slip walkway.
- › Heavy-load bearing walkway and cost-effective.
- › Durable, maintenance-free walkway systems.
- › Safe, convenient, and reliable personal fall protection.
- › Dedicated pathway for repair and maintenance of roof Installed by trained professionals.

CERTIFICATIONS

EN 516 EN ISO 14122-2

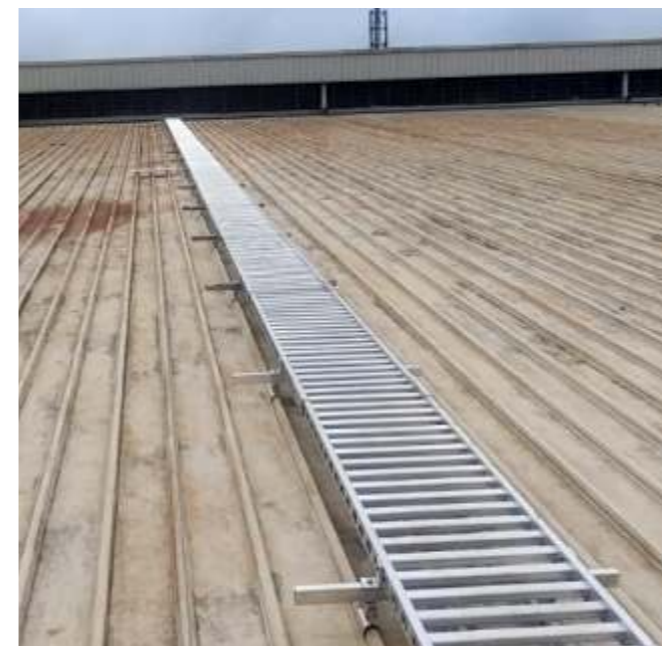
TsaF specializes in custom-designed walkway safety systems for your site.



WALKWAY (CHEQUERED PLATE)



WALKWAY (PERFORATED)



APPLICATIONS



Access and Maintenance
on all types of roof



Repair/Maintenance of
Solar Panels/equipment

Barricade SYSTEM

Safety and security that
defies gravity, not logic.



TsaF's Barricade System **eliminates the threat** by acting as a **hazard barrier** between the worker and the fall hazard. Roof guardrails are used in **commercial, domestic as well as industrial, and construction** settings.

Workers can freely move about inside the perimeter once the guardrail is installed. In addition, there is **no need to tie off** when using the barricade system. Work with **complete freedom of movement** for your secured personnel.



BENEFITS

- › Made of **high-grade weather-resistant aluminum**.
- › Reduce the likelihood of potentially fatal falls as well as injuries.
- › Installed by trained professionals.
- › Choose from **free-standing and fixed guardrails** according to your site needs.
- › Requires no welding, bending, or threading.
- › Require very **little maintenance** over the years.



CERTIFICATIONS

BS EN 13374:2018 ISO 14122-3:2016

Customized Solution Available
Barricade with One Side Handrail
& Both Side Handrail

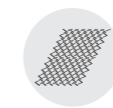
We know that when working at heights,
one can not afford to take any risks.



APPLICATIONS



Roof Hatches



Skylight Guarding



Roof Perimeters



Loading Docks



Warehouse Traffic Lanes

Skylight MESH

Skylight Mesh System secures skylights for worker safety, providing fall protection.



Ensure the **safety of your workers** with our **Skylight Mesh System**, a cutting-edge solution designed to **secure skylights and prevent falls**. Crafted from high-quality materials and engineered with precision, this system offers reliable performance and durability across various applications.

Tailored to **meet site-specific needs**, the system safeguards your personnel and prevents accidents, **ensuring safety and reliability every step of the way**. This innovative solution not only helps employers meet their duty of care but also enhances productivity by allowing workers to operate confidently at height.

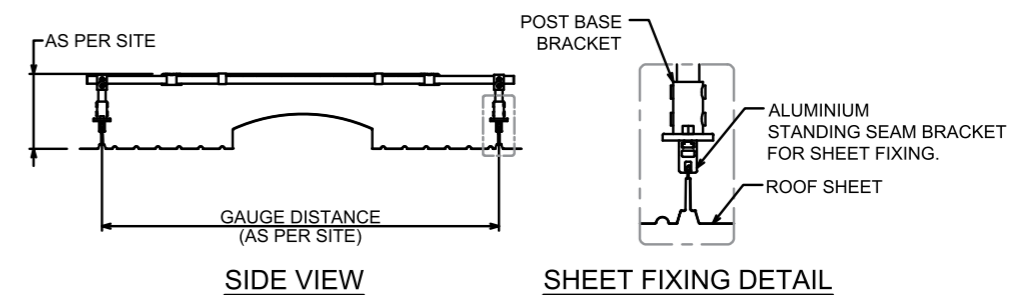
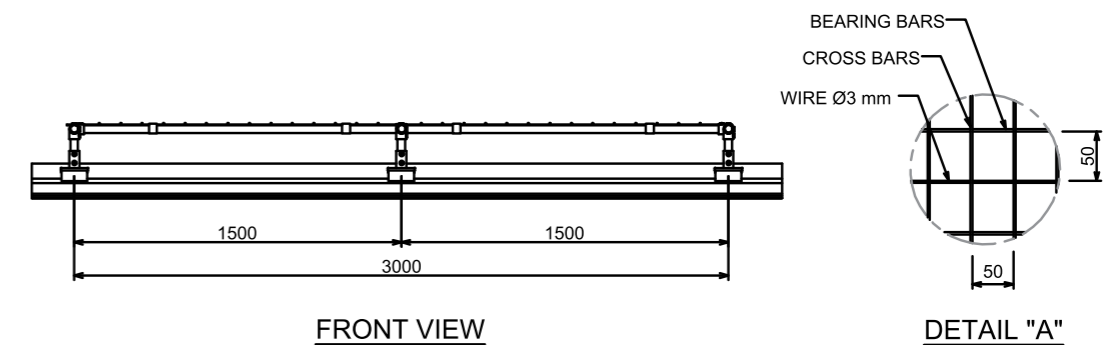
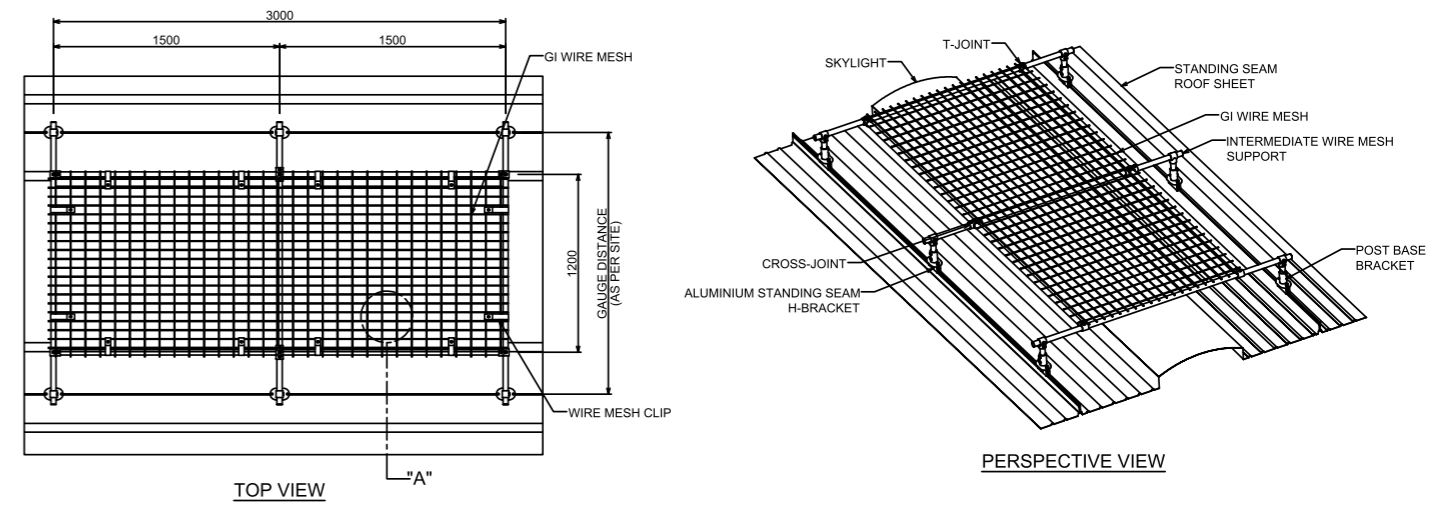
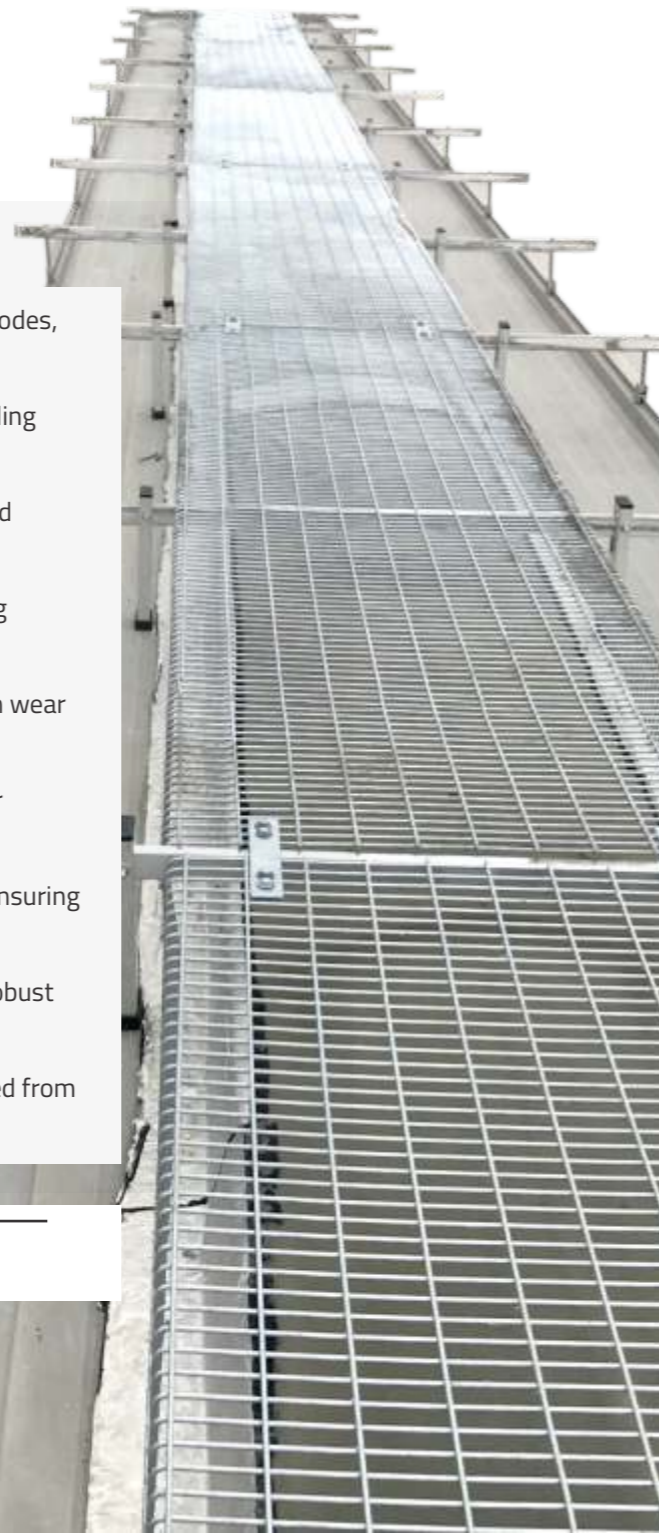
Whether you're working on **construction sites, industrial facilities, or commercial buildings**, our Skylight Mesh System provides the essential fall protection needed for a safe working environment.

BENEFITS

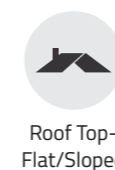
- › Designed and tested to meet OSHA Skylight Screens 1910.23(e)(8) codes, ensuring top-tier safety standards.
- › Features a non-penetrating compression fastening system for standing seam roof sheets, protecting roof integrity.
- › For trapezoidal roof sheets, aluminum rivets with EPDM washers and weatherproof adhesive tapes prevent water leakage.
- › Mesh panels allow natural light to pass through, maintaining building illumination and energy efficiency.
- › Highly durable, moisture-resistant, and capable of withstanding high wear and tear, ensuring long-lasting performance.
- › Hot-dip galvanized components enhance durability, offering superior protection against environmental elements.
- › Adjustable height facility accommodates various roof light shapes, ensuring versatile and secure installation.
- › Constructed with high-strength GI wire mesh and pipe support for robust and reliable protection.
- › Complies with BS EN 1873, effectively retaining a 50kg mass dropped from 2.4m, ensuring robust skylight protection.

CERTIFICATIONS EN 1873:2014+A1:2016

When working on a roof, the use of TsaF Skylight Mesh System eliminates falls, and trips.



APPLICATIONS



Roof Top-Flat/Sloped



Aircraft Hangar



Stadium/Arena



Constructions



Solar Panel Maintenance

Safety

BARRIER SYSTEM

Secure your space with our reliable safety barriers.



TsaF Safety is a global leader in providing modular safety systems, designed for easy installation and cost-effectiveness. Our **Safety Barriers** are engineered to offer **robust protection in diverse environments**, from loading bays and factory walkways to coastal areas and road bridges.

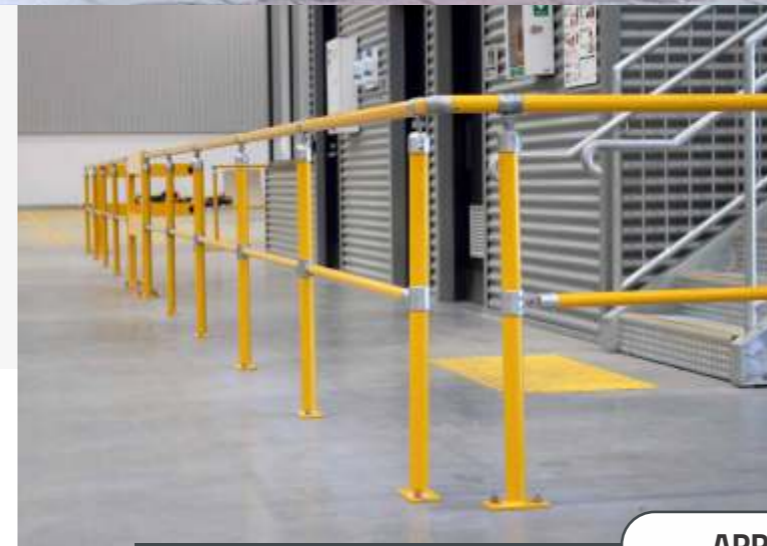
We ensure that our products not only meet but exceed current safety standards. All **Safety Barrier** components are **EN/BIS certified**, guaranteeing **strength, quality, and consistency**. Manufactured to the strictest specifications, our barriers comply with the **European Standards**, giving you peace of mind that your site is fully compliant.

TsaF Clamp components, made from **high-quality iron castings**, are designed to securely lock steel tubes, providing **exceptional strength** and **corrosion resistance**. With a wide range of components available, TsaF Safety offers flexible solutions for all your safety needs, ensuring long-lasting protection in even the most challenging environments.



BENEFITS

- › Corrosion resistance for longevity.
- › Durable and reliable performance.
- › Cost-effective safety solutions.
- › Versatile applications for all environments.
- › Eco-friendly and sustainable choice.



Customized Solutions Available
in Aluminium and GI

CERTIFICATIONS

EN 13374:2018 ISO 14122-3:2016 OSHA 1910.29(f)

Protecting Lives, One Barrier at a Time

APPLICATIONS

- Construction Sites
- Roadways and Highways
- Industrial Facilities
- Public Events and Venues
- Parking Lots and Garages
- Warehouses and Distribution
- Airports and Transportation Hubs
- Public Spaces
- Stadiums

Flowlok

LADDER SYSTEM

Keeping the risk low as you climb higher.



TsaF's FlowLok Vertical Height Access System (VHAS) Ladder System provides access to the roof, where there are no pre-fabricated ladders or climbing structures available. It can be attached to various buildings with the use of different fasteners, making it an ideal solution.

The system includes fall protection ladders, guide rails, and self-guiding fall arresters. The FlowLok VHAS adheres to world-class HSE standards. Ancillary safety devices that are uniquely compatible with the fall protection ladder ensure secure access for the operator.

In the event of a fall, the trolley immediately locks over the rail, thereby arresting the fall. When not in use, the uni-directional locking system of the trolleys does not allow it to fall freely down the guide rail.

BENEFITS

- › Lightweight and uses minimal components.
- › Lesser surface area ensures mitigation of wind load.
- › Made of high-grade Galvanized Steel (Galvanization thickness 70 microns min.).
- › Simple, cost-effective, and versatile.
- › Ribbed rungs prevent slippage welded at 279 mm c/c.

CERTIFICATIONS

EN 353-1:2014 A1:2017
(Module D)


IS 3521 (PART 4): 2021
(CM/L-8800166219)

COC-(2014/34/EU)
ATEX Directive

Always practice safety to prevent drastic falls, when you are up high.



APPLICATIONS

- 
 Power Transmission Towers
- 
 Communication Towers
- 
 Oil Rigs & Platforms
- 
 Water Towers
- 
 Storage Bins & Silos

Fall Protection TRAINING

With safety as the main focus, rigorous standards have been developed and established to provide a safe, quick, and cost-effective means of solving the most difficult of access problems. **Evolution Access Technologies (EAT)** provides training for specific fall protection systems to ensure workplace safety.

VARIOUS COURSES OFFERED:

- Industrial Rope Access Training
- Work at Height-Rescue Training
- Confined Space Entry-Rescue, Rigging, and Lifting
- Ladder Operation and Awareness Training
- Forklift Operator Training
- Mobile Access Platform System Training (Scaffolding)
- Boom and Scissor Lift Operator Training (Aerial Work Platforms)



Enquire regarding our bespoke training packages for your workforce.
For more information on course availability contact info@evolution-access.com

ISO-certified OEM with a manufacturing facility in Jewar.



Our CLIENTS



We have built Fall Protection Systems for small-scale businesses to Fortune 500 companies and formed the most productive relationships that are synergistic and goal-oriented. We have been passionately working with our clients achieving great successes and building lasting relationships.



mtandt

SINCE 1974



MTANDT LIMITED

North Branch: 530, C - Block, Floor - P5, NPX Tower, Sector - 153,
Noida - 201 310, Uttar Pradesh, India.

✉ tsaf@mtandt.com 📞 +91 9090 1010 65 🌐 www.mtandt.com

Specifications may vary. Subject to technical changes, errors, and translation mistakes. Accessories shown in the photographs may not be the part of standard products. Images used are for illustration purposes only and all rights are reserved with the respective owners.
Copyright 2024 Mtandt Group. All rights reserved.

Dil Se Seva

Follow Mtandt Group



Scan for Website



Membership No:
S0435084-600013



National Safety Council
Membership No: CMTN394

