

# Suspended Access Systems for Critical Infrastructure Worldwide



WEB Deck® | WEB Net® | WEB Catch®

# About WEB Systems® International

WEB Systems® International is a Scotland-based engineering company specialising in advanced suspended access and dropped-object protection systems.

We design and deliver unique, engineered solutions that enhance safety, efficiency, and reliability in high-risk and complex environments. Our systems are developed to support inspection, maintenance, and repair activities where conventional access methods are impractical, time-consuming, or unsafe.

Trusted by leading organisations worldwide, WEB Systems® International combines innovative design with proven engineering to provide safer, faster, and more cost-effective alternatives for critical infrastructure and industrial assets.

We engineer the future of safe access.

## Our Core Solutions

**WEB Deck®** – Modular suspended platform system designed for fast, safe under-deck access, enabling efficient inspection, maintenance, and repair of complex structures

**WEB Net®** – Engineered walk-on netting system providing secure work positioning for light-duty tasks in challenging and hard-to-reach areas

**WEB Catch®** – Advanced debris and dropped-object containment system, safeguarding personnel, traffic, waterways, and critical operations below

## Industries & Applications

### Infrastructure

Bridges, highways, airports, stadia, large-span canopies, silos and tanks

### Oil & Gas

Offshore rigs, refineries, production platforms, and helidecks

### Marine & Ports

Jetties, piers, and berthing dolphins

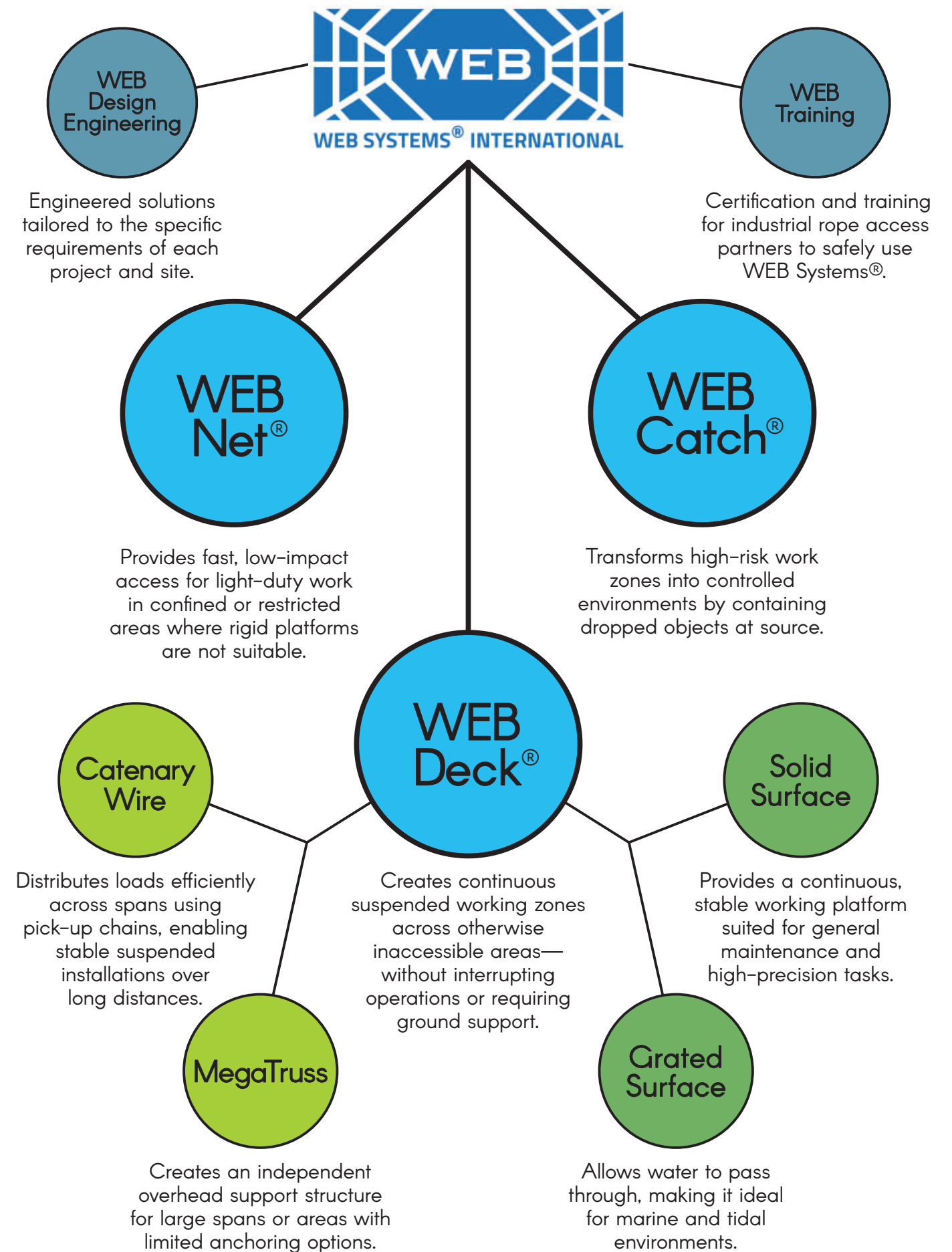
### Power & Industrial

Power plants, utilities, pipe racks, and industrial plants (steel, cement, etc.)

### Maintenance Access

Industrial facilities, conveyor systems, and elevated structures

# WEB Systems® Products and Services



# WEB Systems® – Specifications & Key Benefits

## ● WEB Deck®

**Safe Working Load (SWL):** 3 kN/m<sup>2</sup> (300 kg/m<sup>2</sup> / 61.4 psf)

**Deck Sizes:** 1 m, 2 m, 3 m (L) × 0.6 m (W)  
(3.3 ft, 6.6 ft, 9.8 ft × 2.0 ft)

**Truss Sizes:** 0.6 m, 1.2 m, 1.8 m, 2.4 m  
(2.0 ft, 3.9 ft, 5.9 ft, 7.9 ft)

**Factor of Safety (FOS):** 3:1

**Surface Options:** Solid Deck (trapdoor optional) / Grated Deck

**Configuration:** Modular suspended platform system

**Installation Systems:** Catenary wire / MegaTruss

### Key Benefits

- Up to 60% faster installation\* compared to conventional access methods
- Up to 50% labour savings\* through reduced manpower requirements
- No ground contact – ideal for water, live traffic, or restricted access areas
- Rope access installation – safer, faster, and lower operational risk
- Custom engineered to suit project-specific loads and site conditions
- Lightweight & modular – easy to transport, handle, and store
- Durable & reusable system for multiple project cycles
- Rapid setup & dismantling – minimises downtime and disruption

## ● WEB Net®

**Standard Sizes:** 2 × 4, 3 × 4, 4 × 4, 8 × 4 (m)  
(Approx. in ft: 6.6 × 13.1, 9.8 × 13.1, 13.1 × 13.1, 26.2 × 13.1) (ft)

**Material:** High-tenacity polyester

**Material Properties:** Flame-retardant and UV-stable (Optional)

**Load Capacity (SWL):** 1 kN/m<sup>2</sup> (100 kg/m<sup>2</sup> / 20.9 psf)

**Identification:** ID-tagged for traceability

### Key Benefits

- Ultra-lightweight – approx. 5–10% of traditional scaffolding weight
- Ideal for low-load applications such as inspection and light maintenance
- Rope access installation – faster deployment in restricted areas
- Flexible & adaptable for complex and confined structures
- Flame-retardant and UV-stable material for durability in harsh environments
- Knotted net structure provides secure footing
- Compact & cost-effective – easy storage and reduced logistics cost

## ● WEB Catch®

**Dimensions:** Project-specific (m<sup>2</sup> / ft<sup>2</sup> as required)

**Load Rating (SWL):** Custom-engineered based on project requirements

**Materials:** High-tenacity polyester, galvanized/SS steel, nylon, or Dyneema

**Material Properties:** Flame-retardant and UV-stable (Optional)

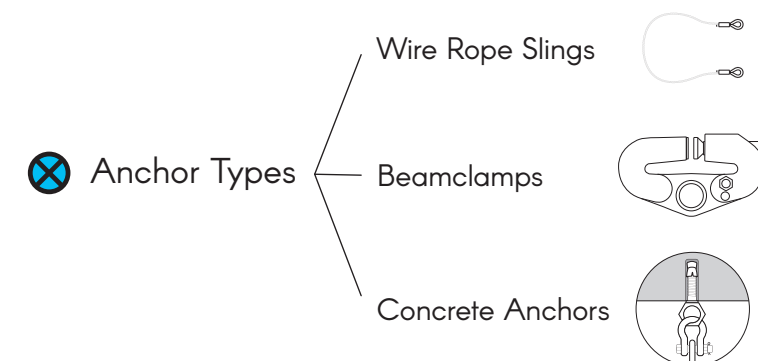
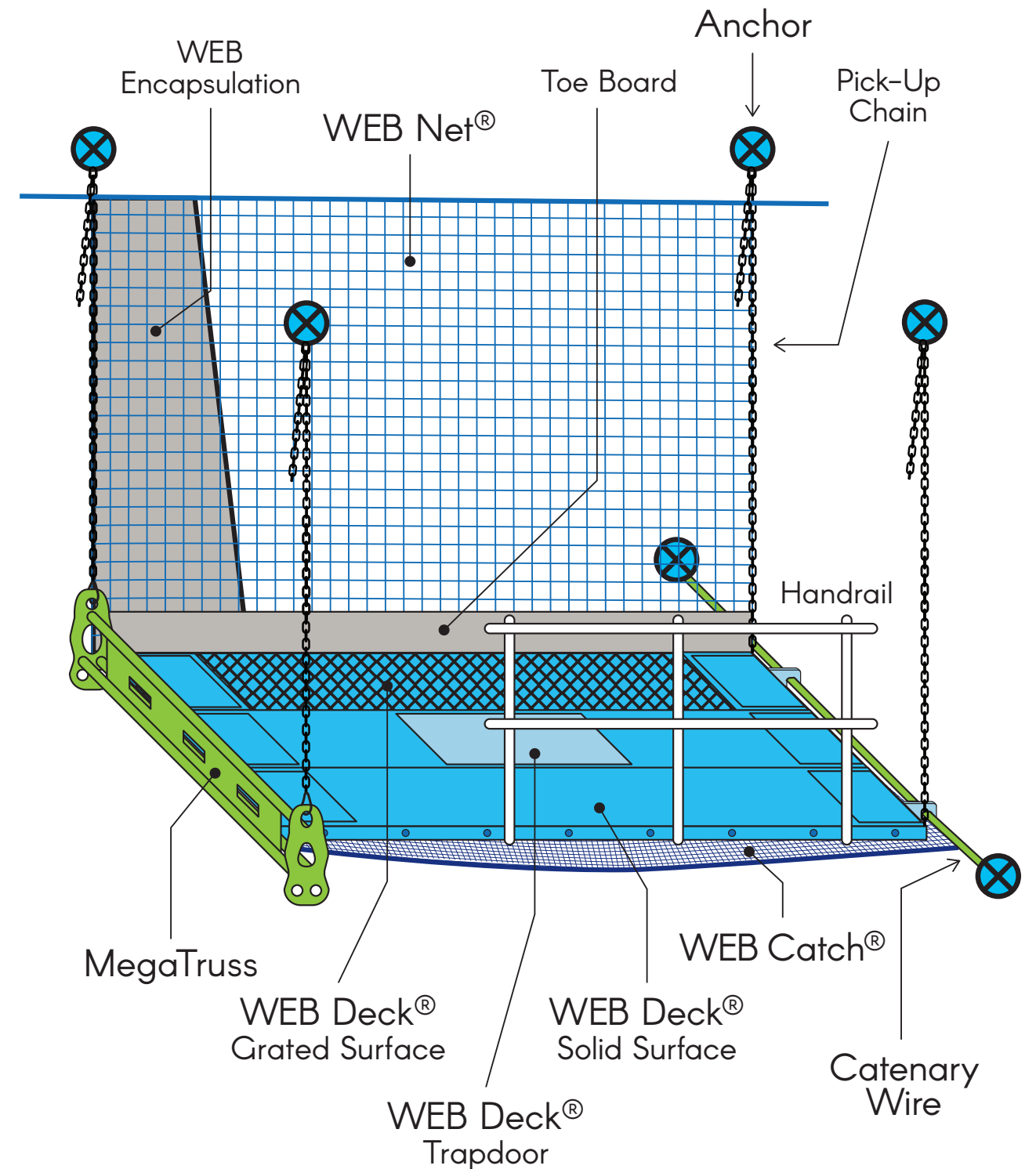
**Identification:** Unique ID tagging for traceability

### Key Benefits

- Custom engineered systems to match specific load and site requirements
- Effective dropped object protection for personnel, equipment, and operations below
- Lightweight design enabling fast installation via rope access
- Minimal structural impact with flexible anchoring solutions
- Suitable for high-risk environments including bridges, offshore, and heavy industry
- Enhances overall site safety without disrupting ongoing operations

\*Performance may vary depending on project scope and site conditions

# WEB Systems® – Components



# Bridges:

## Under-Deck Access with Confidence

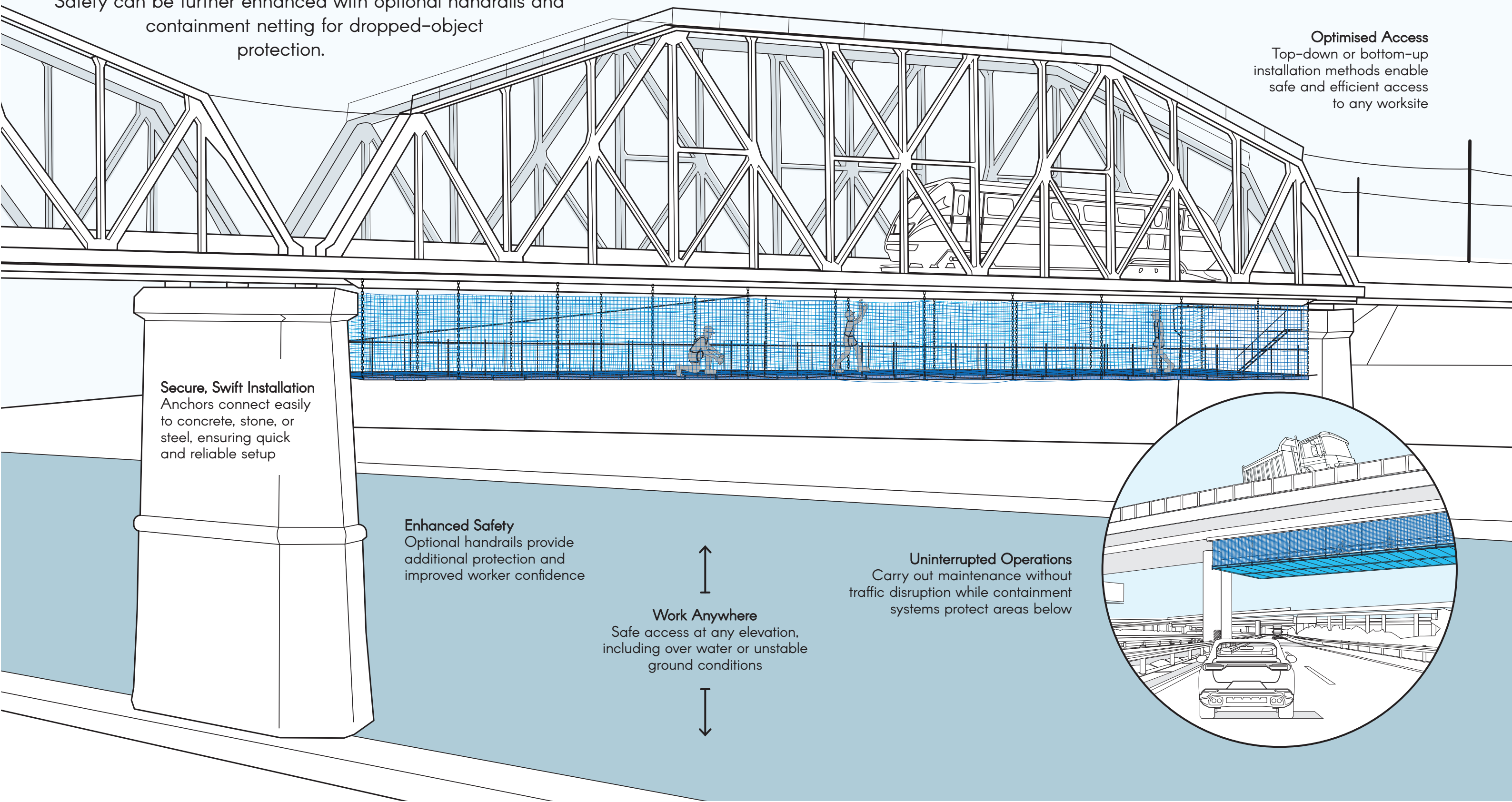


• WEB Systems® Configuration •

Maintain critical highway bridges without disrupting traffic. WEB Systems® provides safe and reliable under-bridge access, even over water or unstable terrain where conventional scaffolding is impractical.

Installation is fast, straightforward, and secure, with anchoring to concrete, stone, or steel. Safety can be further enhanced with optional handrails and containment netting for dropped-object protection.

**Optimised Access**  
Top-down or bottom-up installation methods enable safe and efficient access to any worksite

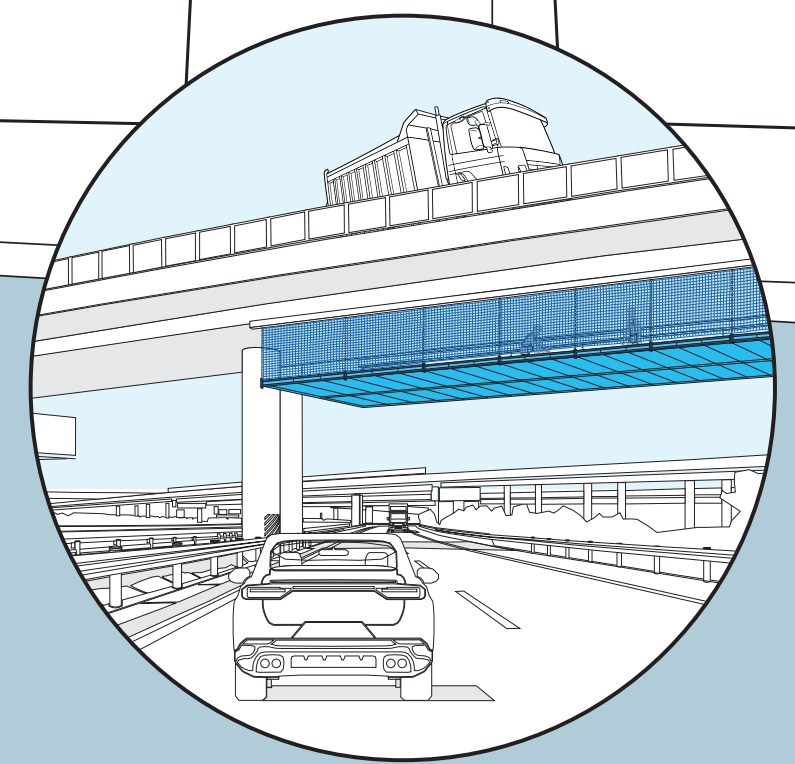


**Secure, Swift Installation**  
Anchors connect easily to concrete, stone, or steel, ensuring quick and reliable setup

**Enhanced Safety**  
Optional handrails provide additional protection and improved worker confidence

**Work Anywhere**  
Safe access at any elevation, including over water or unstable ground conditions

**Uninterrupted Operations**  
Carry out maintenance without traffic disruption while containment systems protect areas below



# Offshore Platforms: Resilience and Efficiency

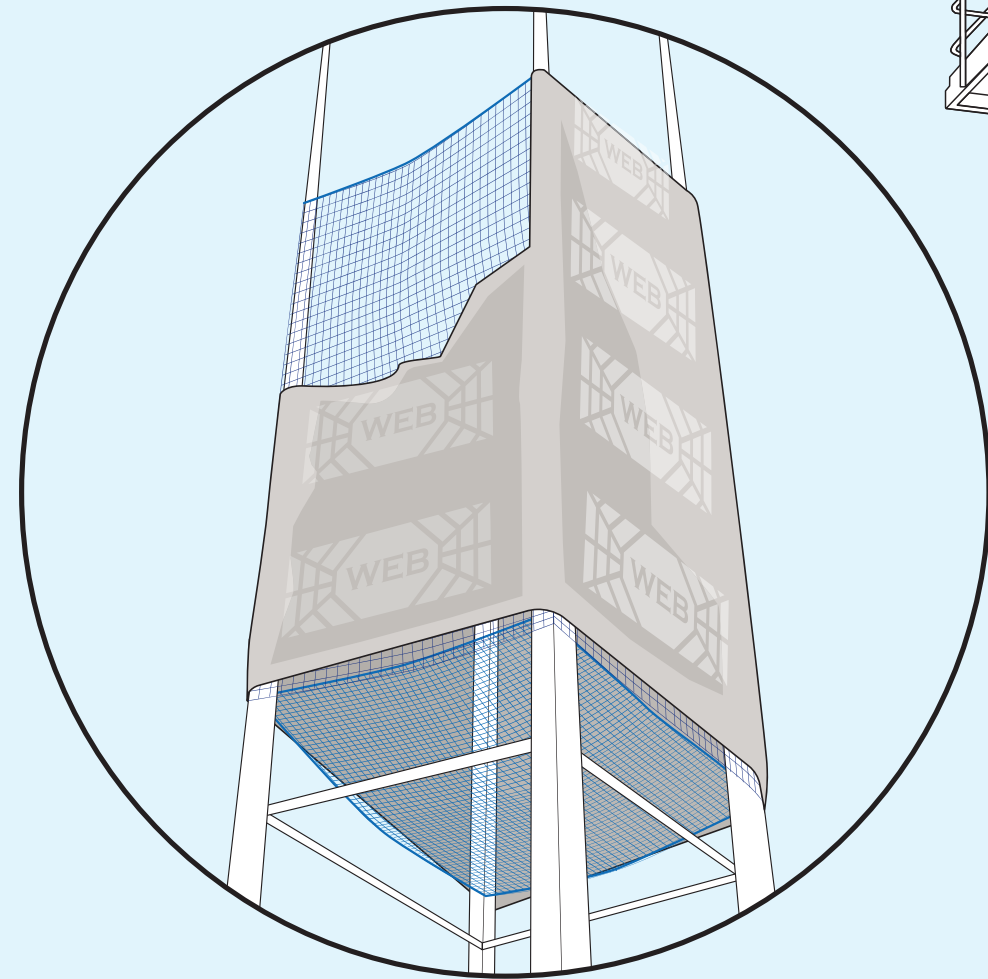
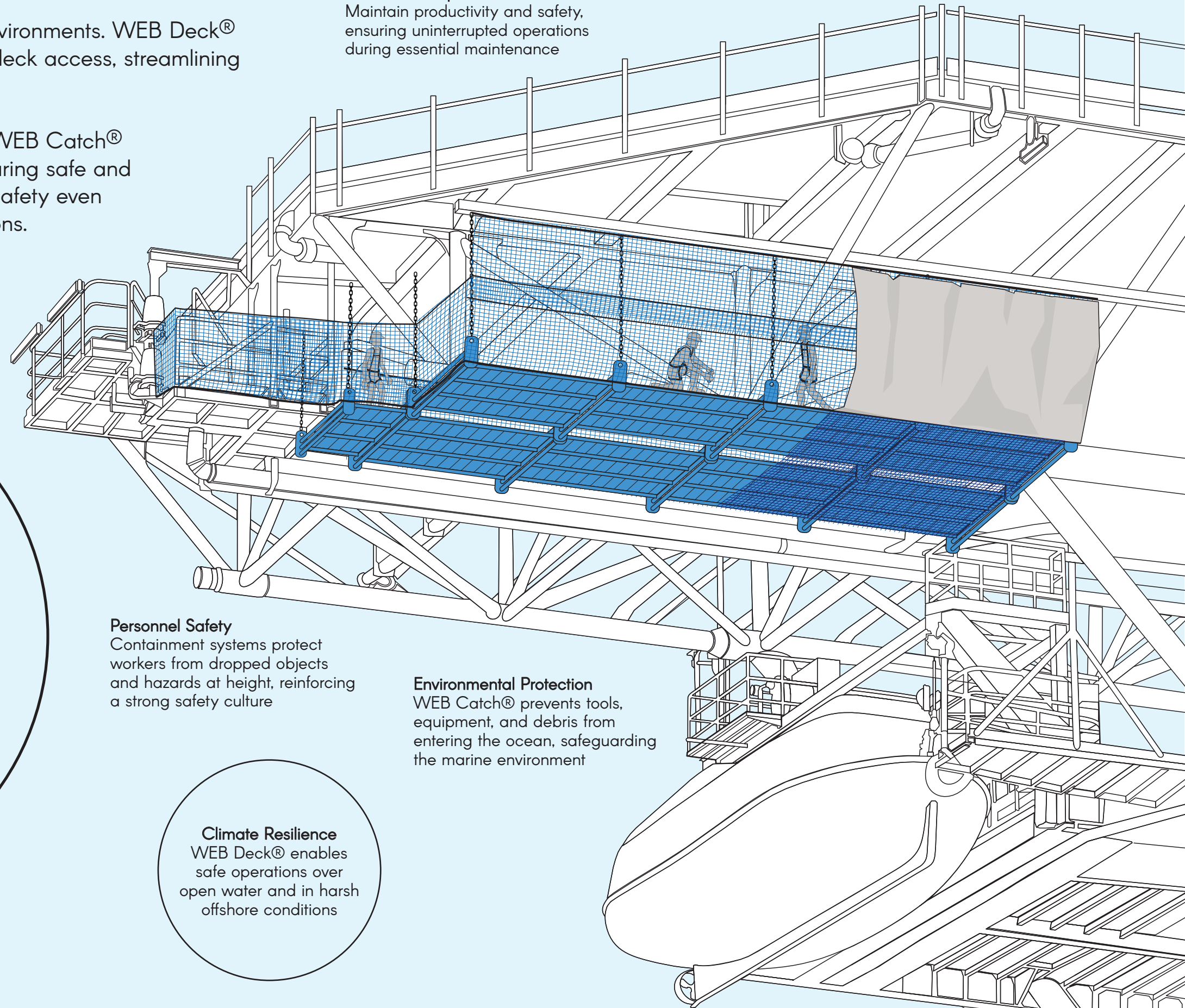


• WEB Systems® Configuration •

Overcome access limitations in harsh offshore environments. WEB Deck® and WEB Net® enable fast and efficient under-deck access, streamlining maintenance while reducing operational costs.

Encapsulated work zones can be created using WEB Catch® to prevent debris from falling into the ocean, ensuring safe and controlled operations. Maintain productivity and safety even over open water and in extreme weather conditions.

**Continuous Operations**  
Maintain productivity and safety, ensuring uninterrupted operations during essential maintenance



### Full Encapsulation

Complete vertical encapsulation supports uninterrupted maintenance while protecting personnel and equipment from falling objects

**Personnel Safety**  
Containment systems protect workers from dropped objects and hazards at height, reinforcing a strong safety culture

**Environmental Protection**  
WEB Catch® prevents tools, equipment, and debris from entering the ocean, safeguarding the marine environment

**Climate Resilience**  
WEB Deck® enables safe operations over open water and in harsh offshore conditions

# Pipe Racks: Rapid Maintenance Access

Simplify inspection, maintenance, and painting activities to prevent costly corrosion. WEB Net® provides fast, cost-effective access beneath pipe racks, enabling swift installation with minimal disruption to plant operations.

Our work-positioning systems are versatile and easy to install using catenary wire or MegaTruss configurations, making them ideal for projects with limited access and clearance.

## Fast & Secure Setup

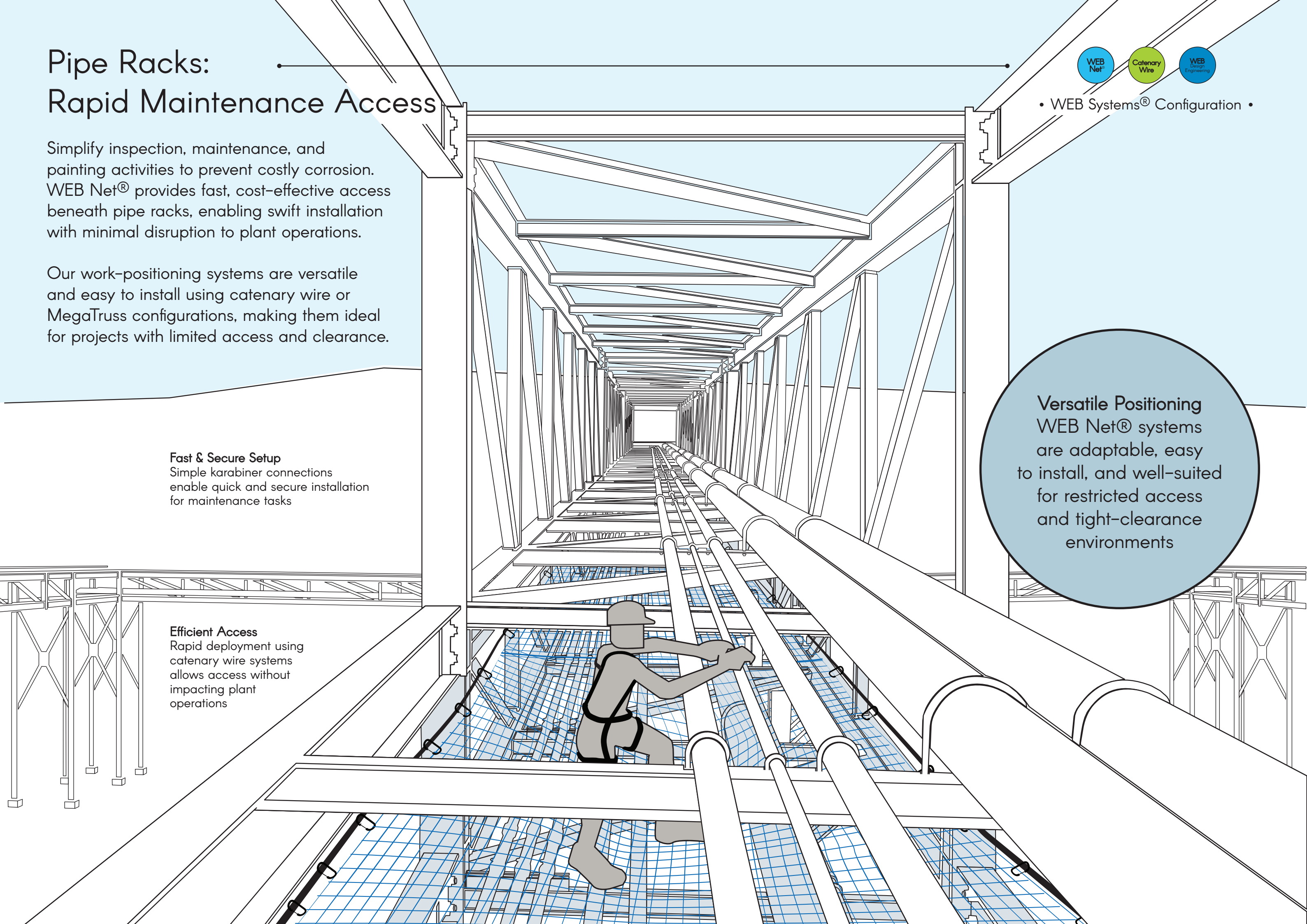
Simple karabiner connections enable quick and secure installation for maintenance tasks

## Efficient Access

Rapid deployment using catenary wire systems allows access without impacting plant operations

• WEB Systems® Configuration •

Versatile Positioning  
WEB Net® systems  
are adaptable, easy  
to install, and well-suited  
for restricted access  
and tight-clearance  
environments



# Operational Interiors: Maintenance Without Disruption



• WEB Systems® Configuration •

## Elevated Work Platform

Provides a stable and secure surface for working at height within confined interiors and Net encapsulation ensures personnel working below are completely safe and work continues seamlessly

## Uninterrupted Production

Maintain full operational continuity while carrying out maintenance activities

## Adaptable Installation

Configurable to suit complex layouts, restricted access, and structural constraints

Carry out essential repairs above fully operational production lines without interrupting ongoing operations. WEB Deck®, combined with optional handrails and toe-boards, provides safe and reliable access for maintenance teams working on roof trusses and ceiling areas.

This solution enhances safety while minimizing disruption to critical production and supply chain continuity.

# Arenas: Specialised Access for Large-Span Structures



• WEB Systems® Configuration •

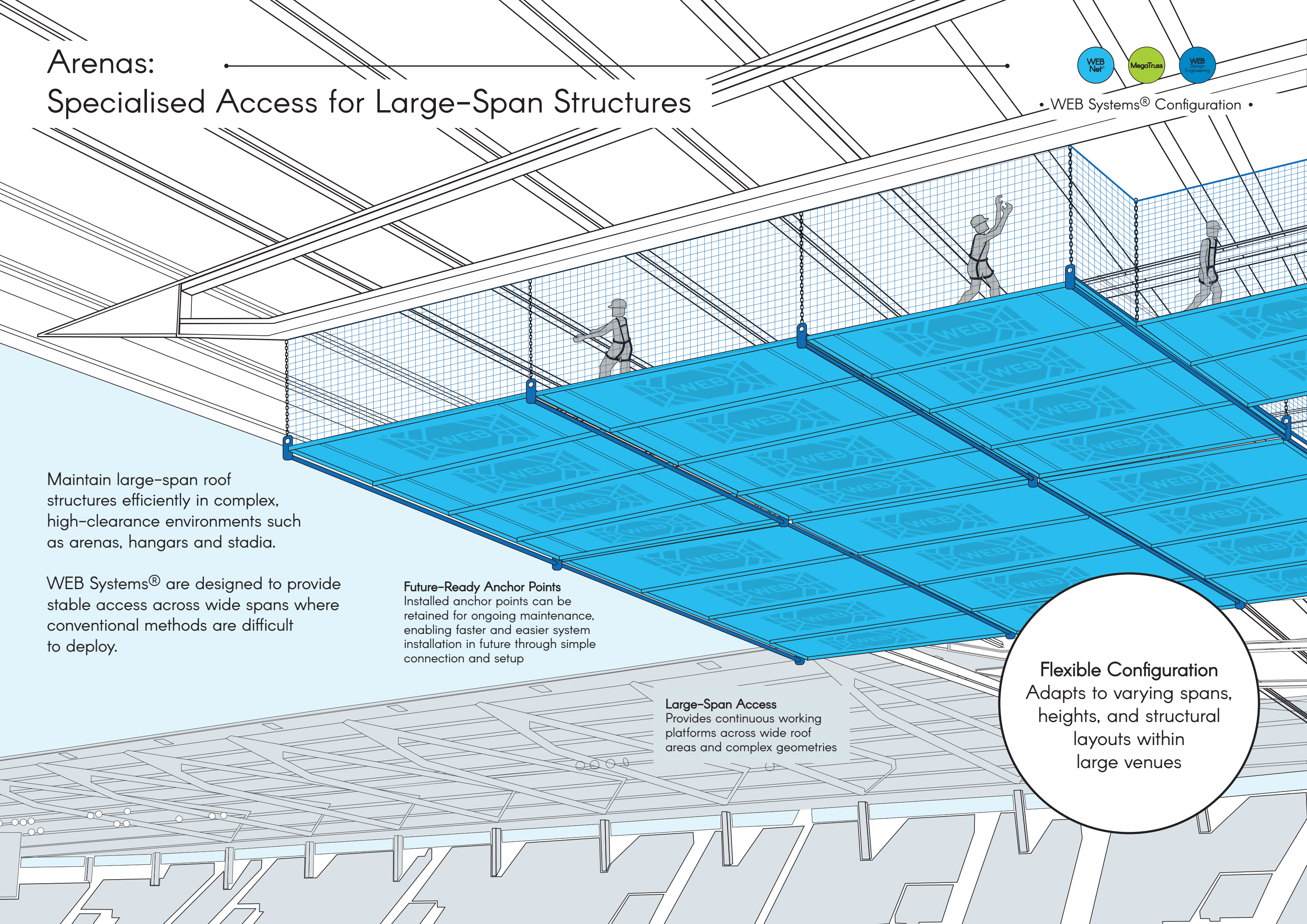
Maintain large-span roof structures efficiently in complex, high-clearance environments such as arenas, hangars and stadia.

WEB Systems® are designed to provide stable access across wide spans where conventional methods are difficult to deploy.

**Future-Ready Anchor Points**  
Installed anchor points can be retained for ongoing maintenance, enabling faster and easier system installation in future through simple connection and setup

**Large-Span Access**  
Provides continuous working platforms across wide roof areas and complex geometries

**Flexible Configuration**  
Adapts to varying spans, heights, and structural layouts within large venues



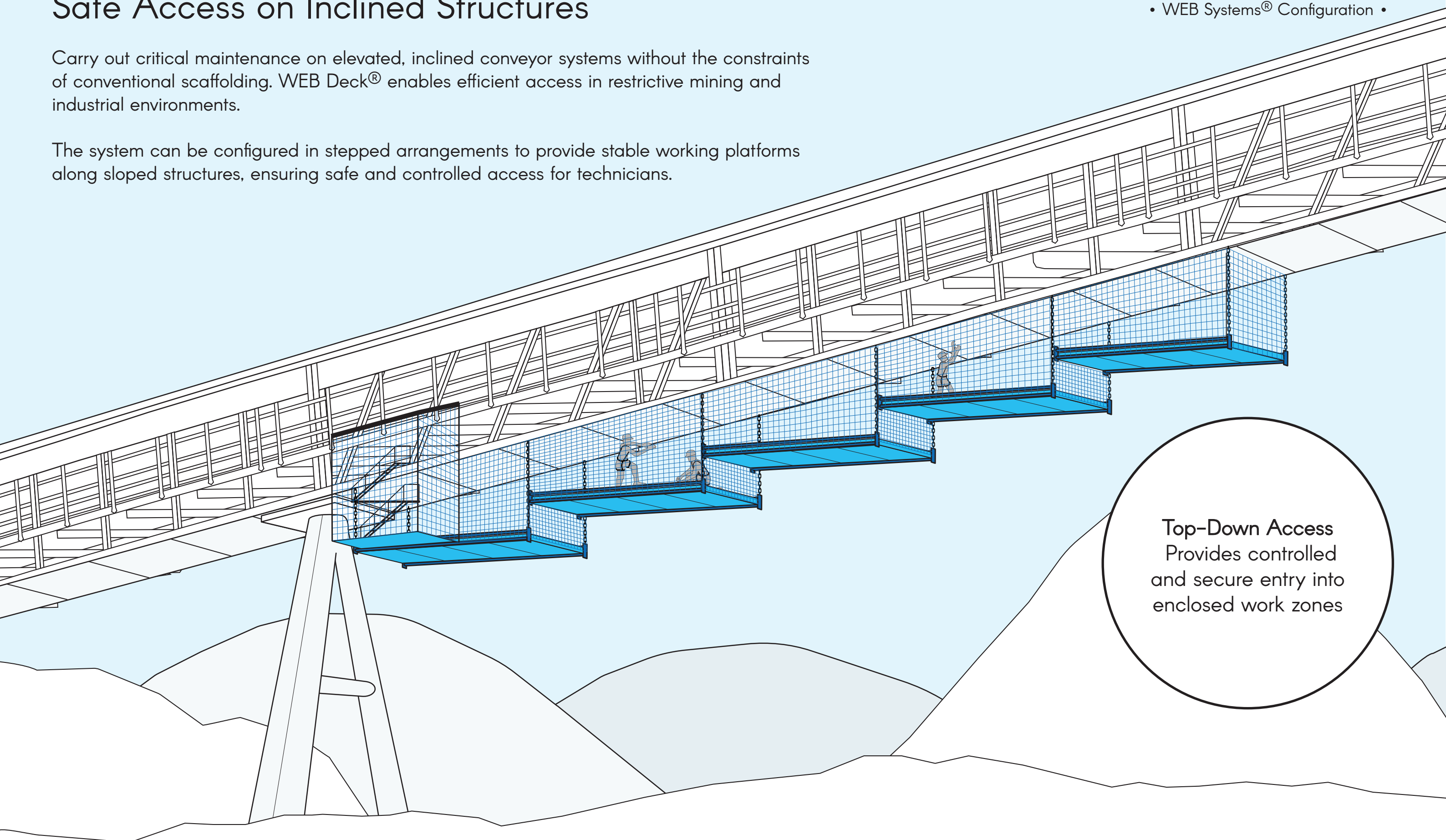
# Conveyor Bridges: Safe Access on Inclined Structures



• WEB Systems® Configuration •

Carry out critical maintenance on elevated, inclined conveyor systems without the constraints of conventional scaffolding. WEB Deck® enables efficient access in restrictive mining and industrial environments.

The system can be configured in stepped arrangements to provide stable working platforms along sloped structures, ensuring safe and controlled access for technicians.



Top-Down Access  
Provides controlled  
and secure entry into  
enclosed work zones

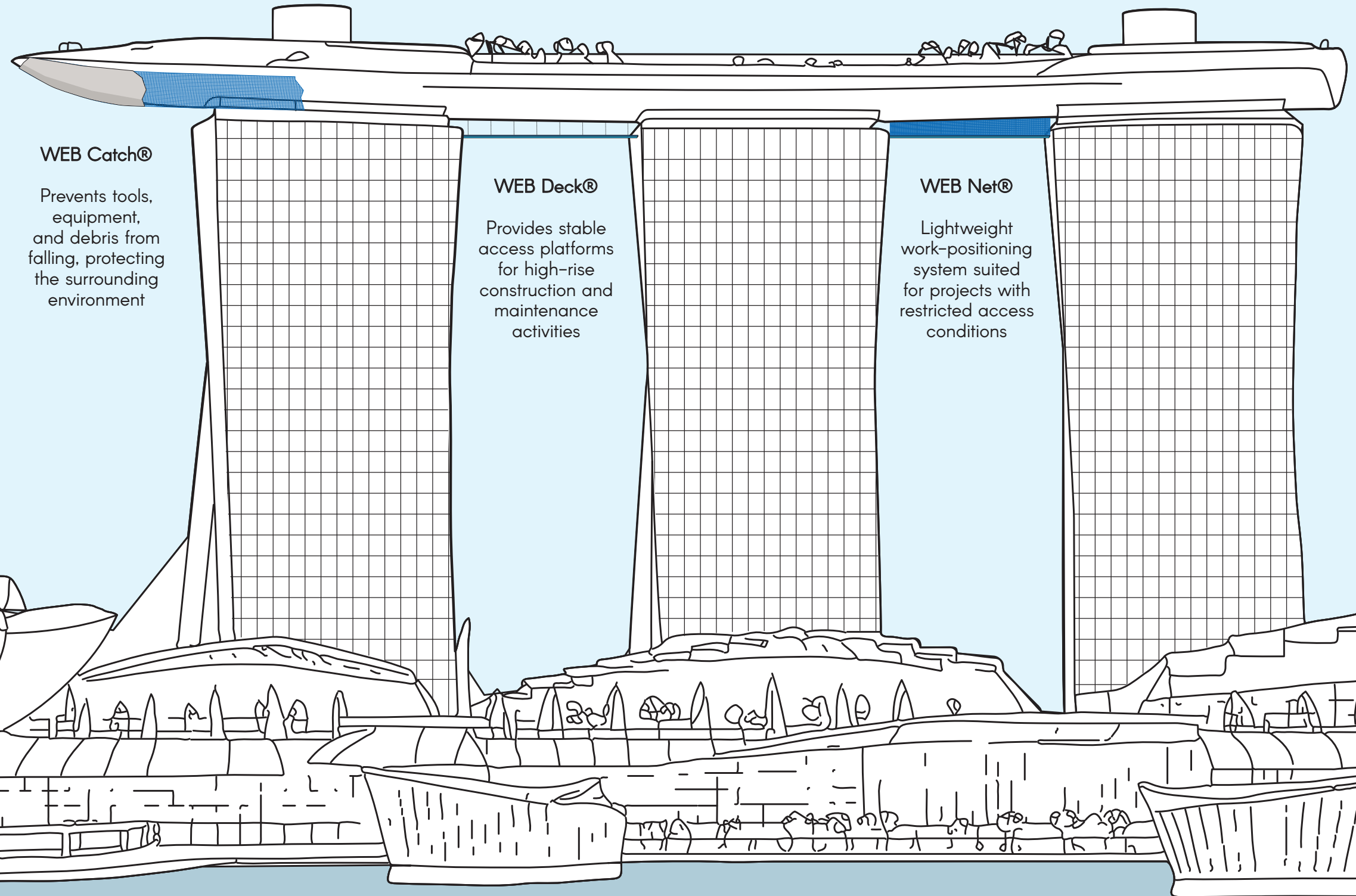
# High-Rise Construction: Access at Extreme Heights



• WEB Systems® Configuration •

Address the unique access challenges of modern high-rise construction, from recessed façades to cantilevered structures. WEB systems® provide practical solutions where traditional access methods are limited by height, complexity, and dense urban environments.

Designed for vertical applications, the system enables safe and controlled access while supporting compliance with stringent safety and dropped-object protection requirements.



## WEB Catch®

Prevents tools, equipment, and debris from falling, protecting the surrounding environment

## WEB Deck®

Provides stable access platforms for high-rise construction and maintenance activities

## WEB Net®

Lightweight work-positioning system suited for projects with restricted access conditions

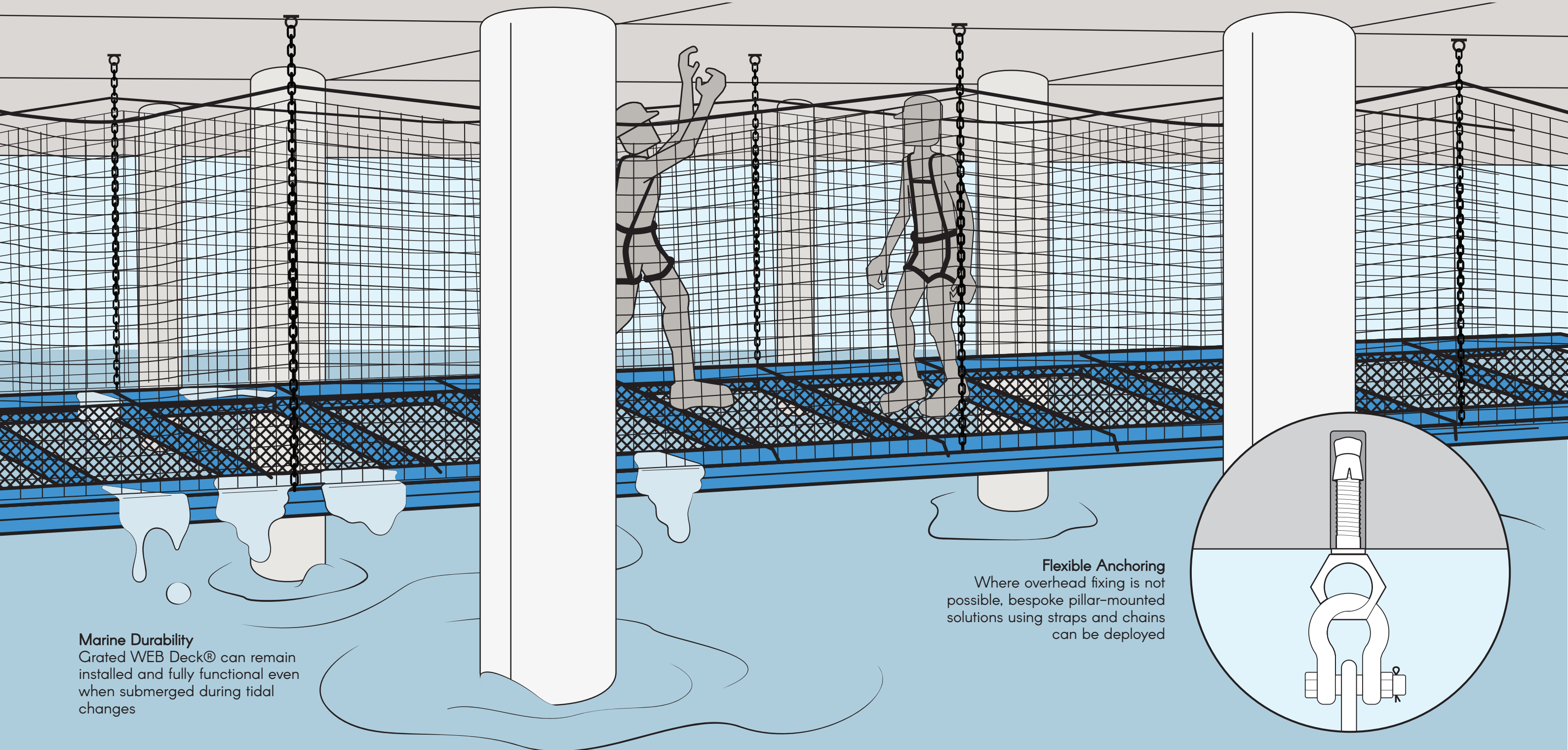
# Jetties & Piers: Access in Marine Environments



• WEB Systems® Configuration •

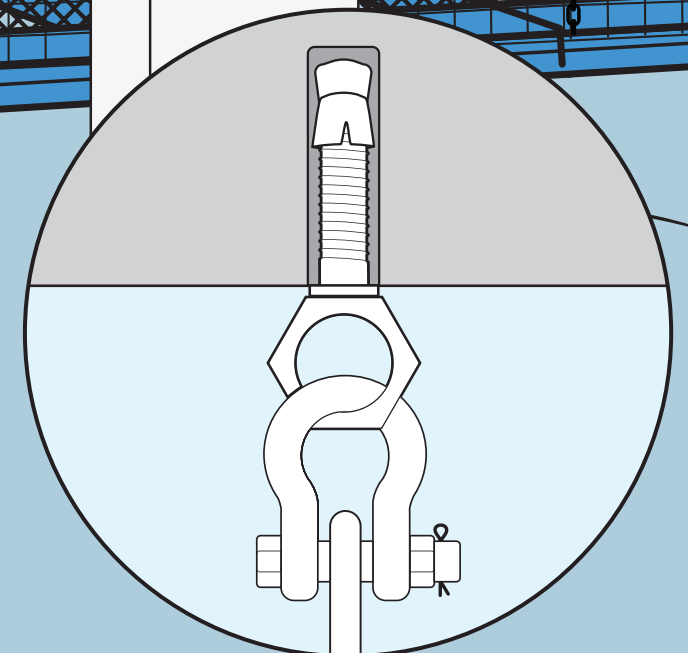
Enable safe and reliable maintenance where conventional access methods such as staging or barges are not feasible. WEB systems provide under-deck access solutions designed for marine conditions, allowing work to be carried out directly from the structure.

The grated decks are engineered to remain in place through tidal cycles, the system supports continuous maintenance activities, including corrosion control and pile repairs in challenging environments.



**Marine Durability**  
Grated WEB Deck® can remain installed and fully functional even when submerged during tidal changes

**Flexible Anchoring**  
Where overhead fixing is not possible, bespoke pillar-mounted solutions using straps and chains can be deployed



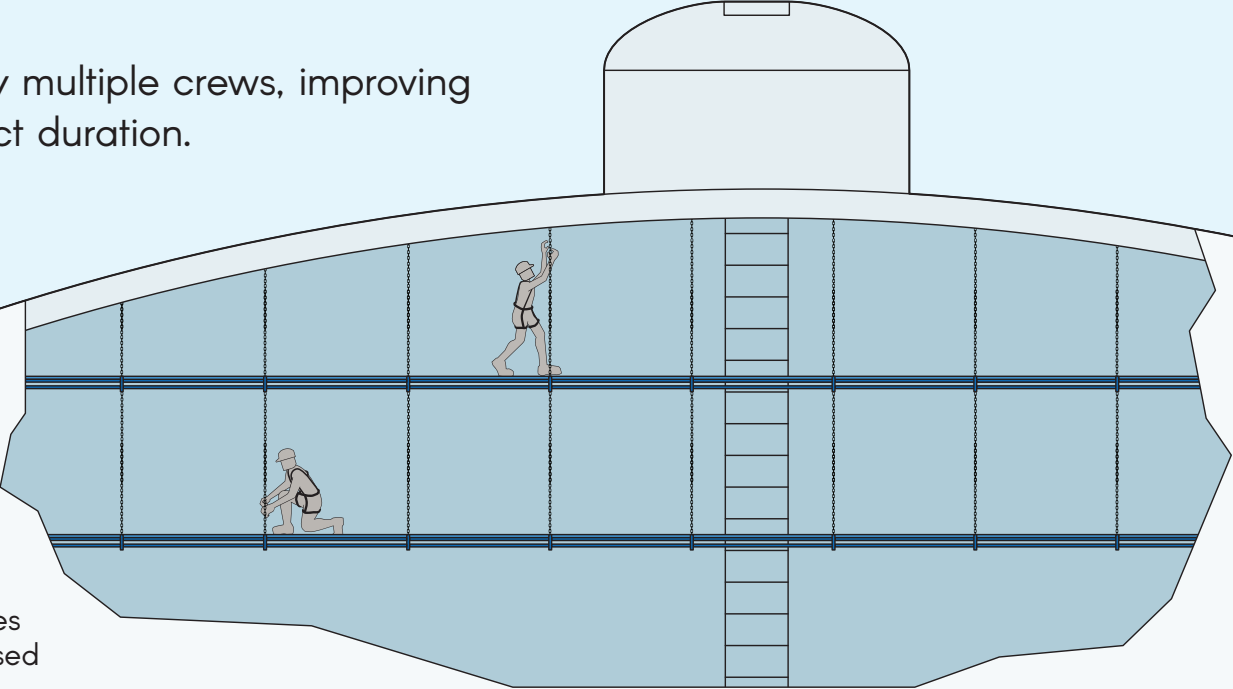
# Water Tanks & Silos: Multi-Level Confined Space Access



• WEB Systems® Configuration •

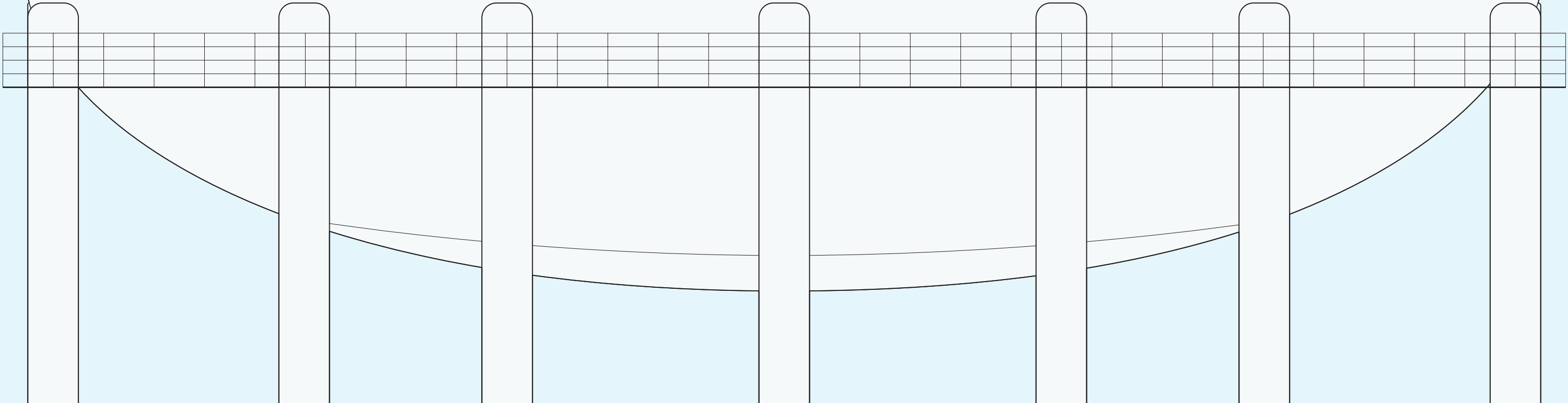
Enable efficient maintenance within vertical, confined structures such as water tanks and silos. WEB Deck® can be configured in multi-level arrangements, allowing safe access across different elevations within the same structure.

This approach supports parallel work by multiple crews, improving coordination and reducing overall project duration.



**Confined Space Access**  
Overcomes logistical challenges associated with vertical, enclosed maintenance environments

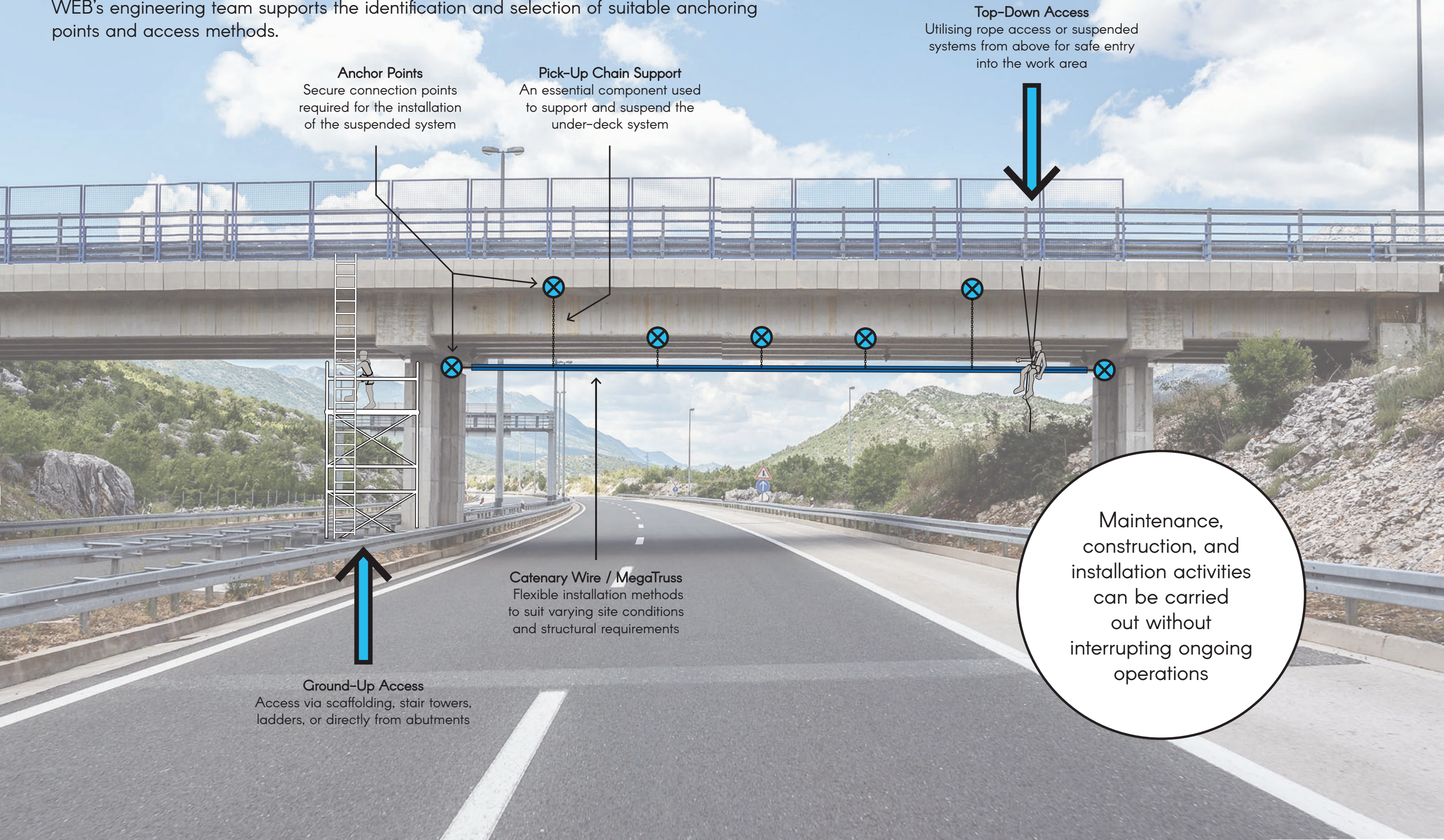
**Simultaneous Workflow**  
Multi-tier configurations allow concurrent operations, significantly improving efficiency



# Engineering Anchor Points & Access to Work Areas

Based on the project type and application, access to the work area is determined by the contractor following a detailed risk assessment and evaluation of available options.

WEB's engineering team supports the identification and selection of suitable anchoring points and access methods.



**Anchor Points**  
Secure connection points required for the installation of the suspended system

**Pick-Up Chain Support**  
An essential component used to support and suspend the under-deck system

**Top-Down Access**  
Utilising rope access or suspended systems from above for safe entry into the work area

**Ground-Up Access**  
Access via scaffolding, stair towers, ladders, or directly from abutments

**Catenary Wire / MegaTruss**  
Flexible installation methods to suit varying site conditions and structural requirements

Maintenance, construction, and installation activities can be carried out without interrupting ongoing operations

# Proven: Project by Project

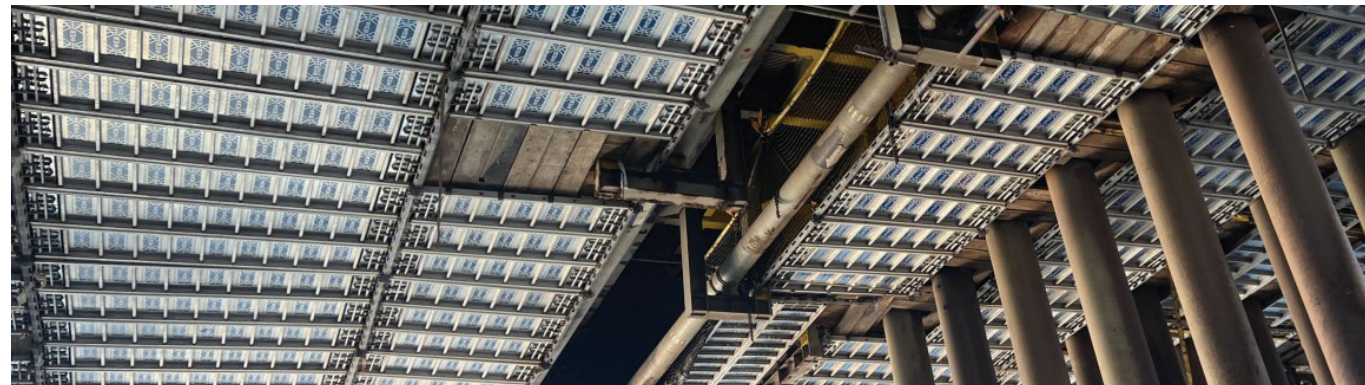
Photo gallery of projects that have been successfully completed.



Bridge installation



Bridge installation



Bridge installation



Bridge installation with WEB Deck®, WEB Net® and encapsulation



Complete bridge installation



Complete bridge installation



Bridge installation



A stepped installation on a construction site



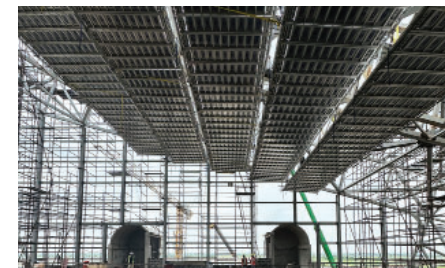
WEB Deck®



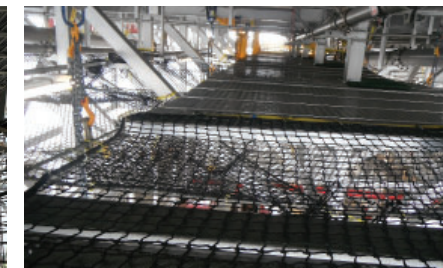
WEB Deck®



WEB Deck® and MegaTruss



WEB Deck®



WEB Deck® and WEB Net®



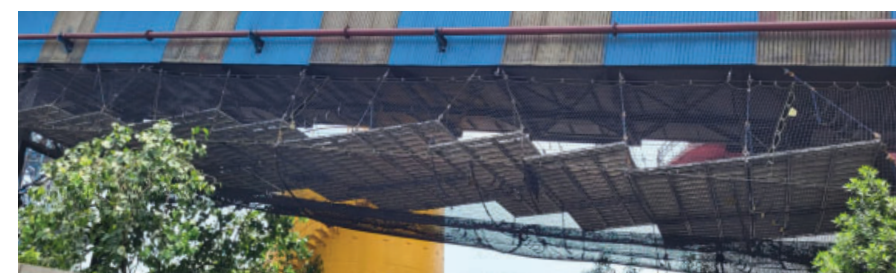
WEB Deck®



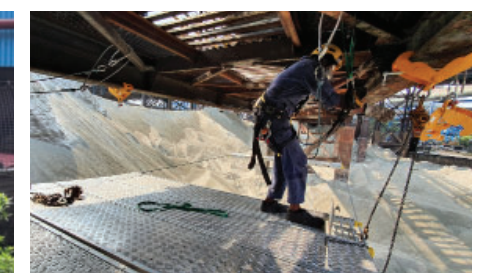
WEB Deck® offshore installation



WEB Deck® arena installation



Full encapsulation installation



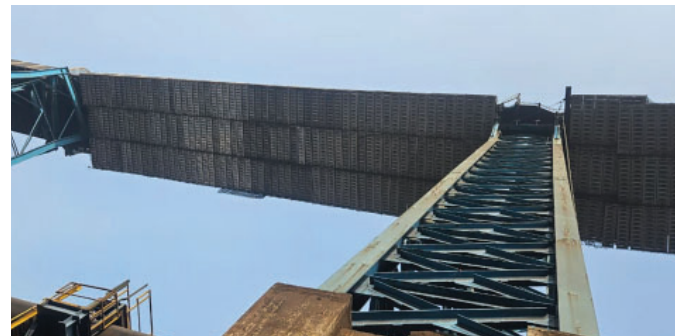
WEB Deck® installation

# Proven: Project by Project

Photo gallery of projects that have been successfully completed.



Stepped installation on a conveyor bridge



WEB Deck® crane installation



Jetty installation



Jetty installation



Grated deck installation



Ground up access



Jetty installation



Jetty installation



WEB Net®



WEB Net®



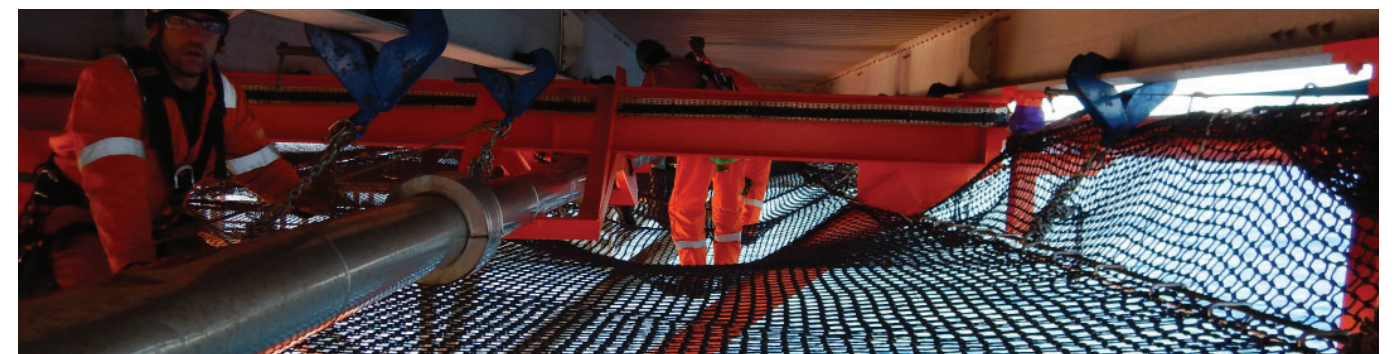
WEB Net®



WEB Net®



WEB Net®



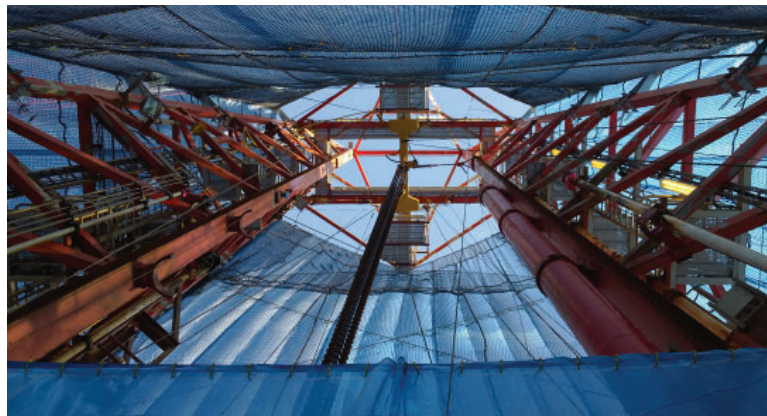
WEB Net®

# Proven: Project by Project

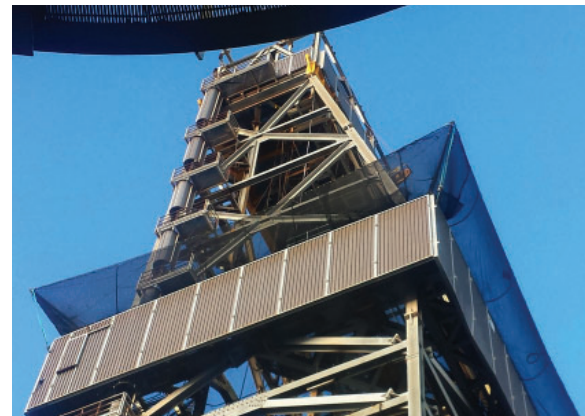
Photo gallery of projects that have been successfully completed.



Full encapsulation of an offshore rig



WEB Net® encapsulation



WEB Catch®



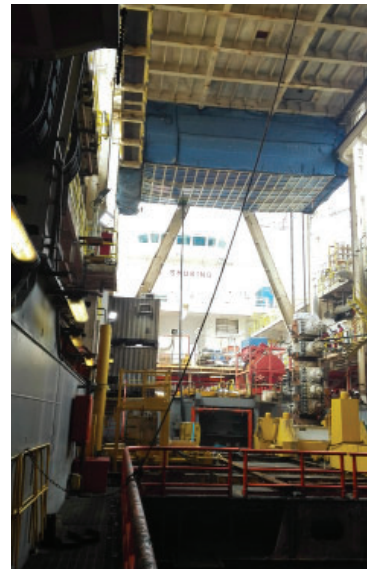
WEB Catch®



WEB encapsulation



WEB Deck® stepped installation



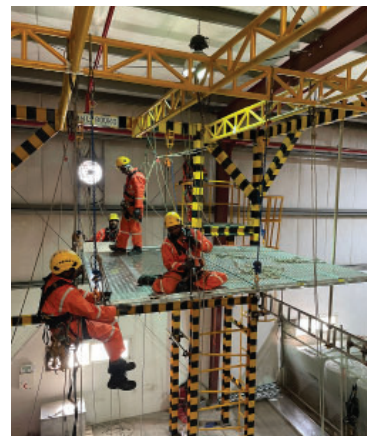
WEB encapsulation



Rope access technician



Training of a partner company to install WEB Deck® and WEB Net®



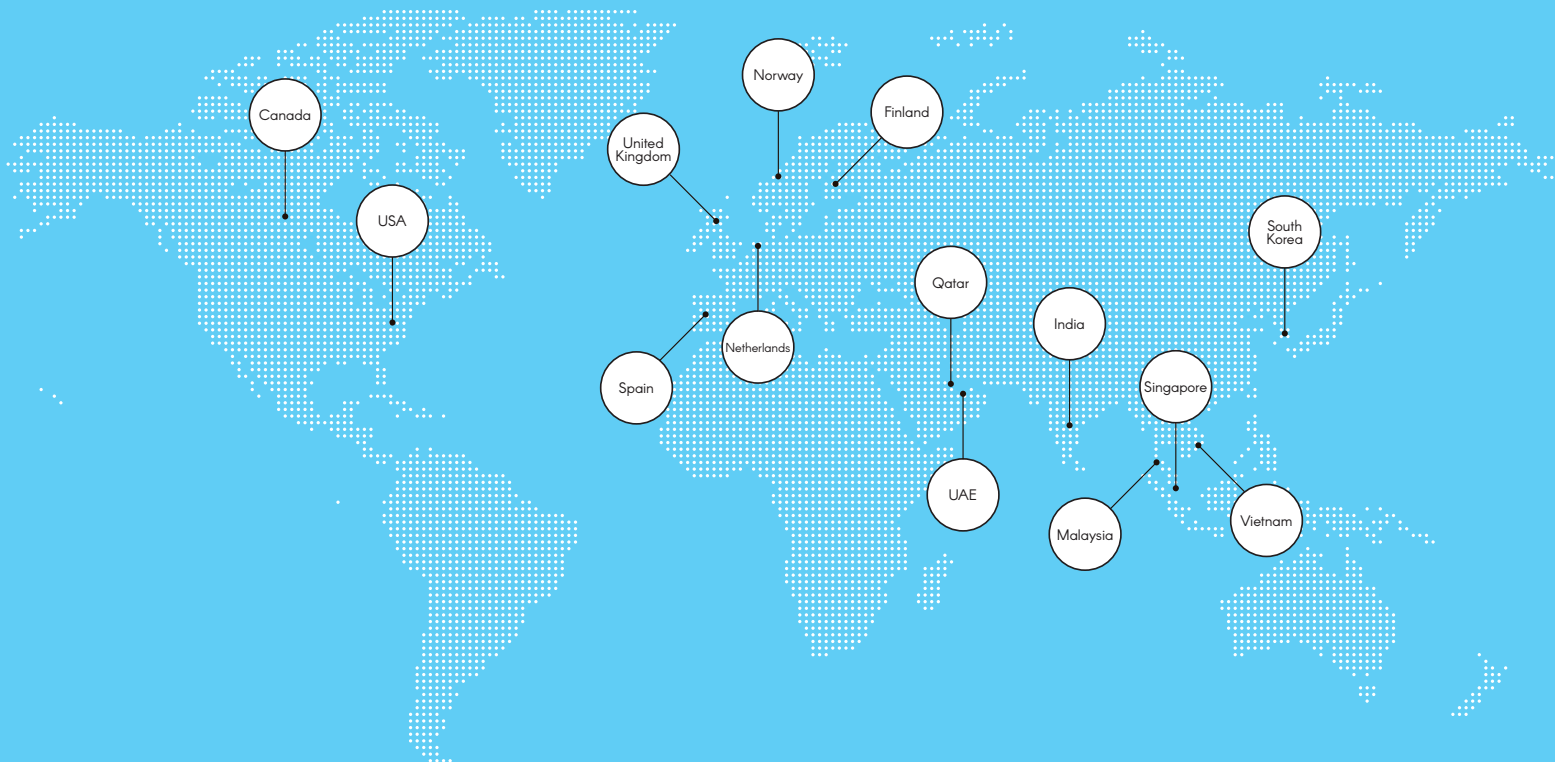
WEB personnel and manufacturing facility





# Built to Reach. Engineered to Last.

## Our Global Network



### Standards & Certifications

Certifications vary by product, configuration, and application



Follow us on social media or Scan the QR code for more information



[web-international.com](http://web-international.com) | [sales@web-international.com](mailto:sales@web-international.com) | +44 (0) 131 581 9224

WEB Systems International, 5 South Charlotte Street, Edinburgh EH2 4AN, Scotland, UK